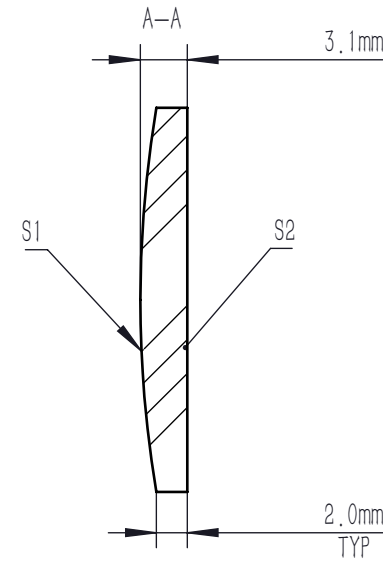
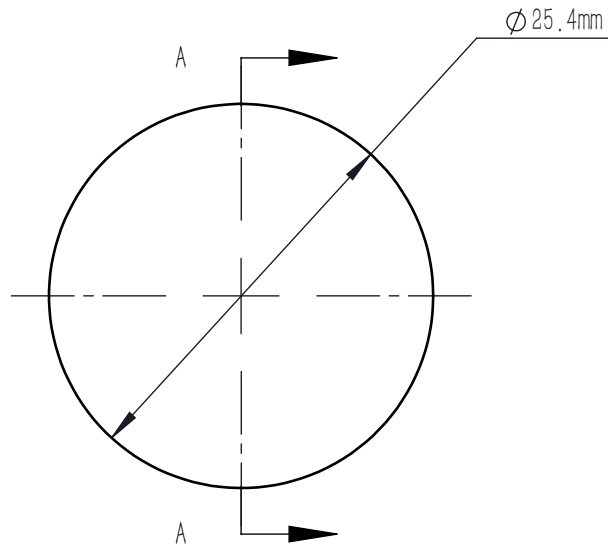
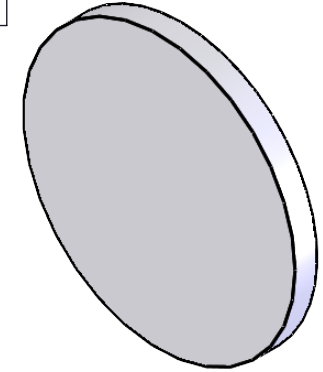


	R	k	A4	A6	A8	A10	A12	A14	A16
S1	76.06	-0.28	-8.4875482e-008	-1.0726422e-011	2.5251935e-014	-2.1802178e-016	1.1056644e-019	7.5352655e-021	-2.8186247e-023
S2	INFINITE	-	-	-	-	-	-	-	-

$$Z = \frac{Y^2}{R(1 + \sqrt{1 - (1 + K)Y^2/R^2})} + A_4Y^4 + A_6Y^6 + A_8Y^8 + A_{10}Y^{10} + A_{12}Y^{12} + A_{14}Y^{14} + A_{16}Y^{16}$$



NOTES:

1. MATERIAL: N-BK7
2. DESIGN WAVELENGTH: 1030 nm
3. NUMERICAL APERTURE: 0.076
4. FOCAL LENGTH: 150.00 mm
5. FOCAL LENGTH TOLERANCE:  $\pm 1\%$
6. BACK FOCAL LENGTH (REF): BF=147.94 mm
7. CLEAR APERTURE:  $>90\%$ CA
8. DIAMETER TOLERANCE:  $+0.0/-0.1$  mm
9. THICKNESS TOLERANCE:  $\pm 0.1$  mm
10. CHAMFER: 0.2 mm,  $45^\circ$
11. WAVEFRONT ERROR (RMS):  $<0.5 \mu\text{m}$
12. SAG DEVIATION (POWER, S1):  $\pm 7.5 \mu\text{m}$
13. SURFACE IRREGULARITY (S1):  $<3$  FRINGES
14. SURFACE FLATNESS (S2) :  $< \lambda/4$
15. SURFACE QUALITY (S2, S2) : 60/40 (S/D)
16. CENTRATION:  $<3$  arcmin
17. AR COATING (S1, S2):  $R_{\text{avg}} < 0.5\%$  @700-1100 nm,  $6^\circ$  AOI

DRAWING PROJECTION			<b>LBTEK</b>			
NAME	DATE	AC1615-B				
DRAWN	SHAN	NOV./14th/25	ASPHERIC LENS			
APPROVAL	WCHENG	NOV./14th/25	MATERIAL	WEIGHT	SCALE	REV
FOR INFORMATION ONLY NOT FOR MANUFACTURING PURPOSES			N-BK7	3.18g	2:1	A