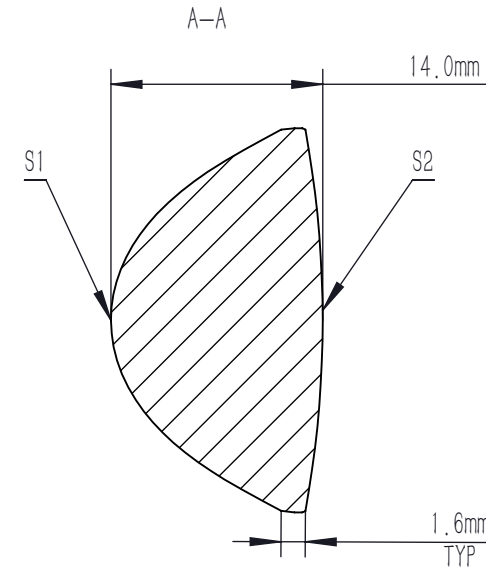
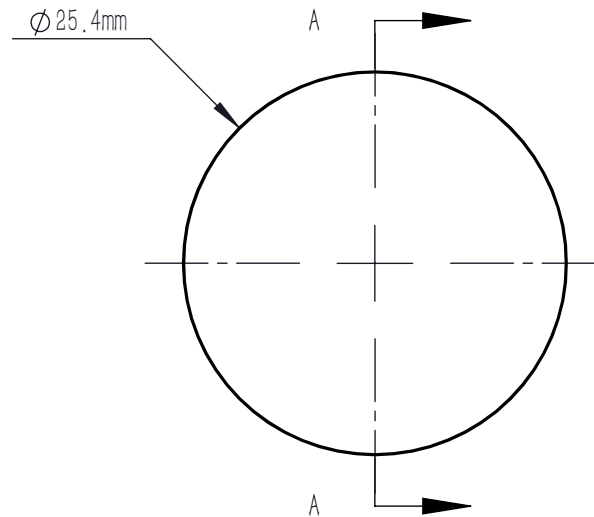
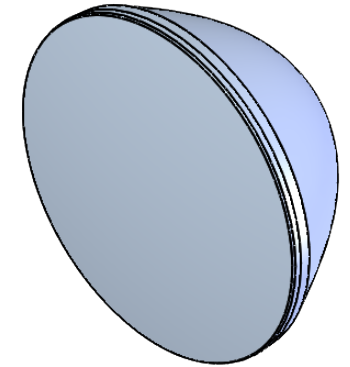


ASPHERIC COEFFICIENTS

| | R | k | A4 | A6 | A8 | A10 |
|----|-----------|------------|---------------|---------------|--------------|----------------|
| S1 | 8.818197 | -0.9991715 | 8.6821674E-05 | 6.3760123E-08 | 2.407308E-09 | -1.7189021E-11 |
| S2 | -69.99948 | - | - | - | - | - |

ASPHERIC LENS EQUATION

$$z = \frac{Y^2}{R(1 + \sqrt{1 - (1 + k)Y^2/R^2})} + A_4Y^4 + A_6Y^6 + A_8Y^8 + A_{10}Y^{10}$$



NOTES

1. MATERIAL: B270
2. DESIGN WAVELENGTH: 633.0 nm
3. WORKING WAVELENGTH: 1100 nm-1650 nm
4. NUMERICAL APERTURE: 0.79
5. F/#: 0.70
6. FOCAL LENGTH: 16.0 mm
7. FOCAL LENGTH TOLERANCE: ±8%
8. BACK FOCAL LENGTH(REF): bf=7.3 mm
9. CLEAR APERTURE: >90%CA
10. DIAMETER TOLERANCE: +0.0/-0.5 mm
11. THICKNESS TOLERANCE: ±0.3 mm
12. CHAMFER: 0.2 mm, 45°
13. SURFACE QUALITY: 80-50 SCRATCH-DIG
14. CENTRATION: <30 arcmin
15. MAXIMUM TEMPERATURE: 250 °C(482 °F)
16. AR COATING: Ravg<0.5%@1100 nm-1650 nm, 6° AOI

| | | | | | | |
|--|--------|-------------|--|--------|-------|-----|
| DRAWING PROJECTION | | | LBTEK | | | |
| | | | | | | |
| | NAME | DATE | AC4704-C | | | |
| DRAWN | BSHU | Aug./1st/24 | ∅ 25.4 mm, F=16.0 mm, NA=0.79 ASPHERIC CONDENSER LENS AR COATING 1100-1650nm | | | |
| APPROVAL | WCHENG | Aug./1st/24 | MATERIAL | WEIGHT | SCALE | REV |
| FOR INFORMATION ONLY NOT FOR MANUFACTURING PURPOSES | | | B270 | 9.90g | 2:1 | A |