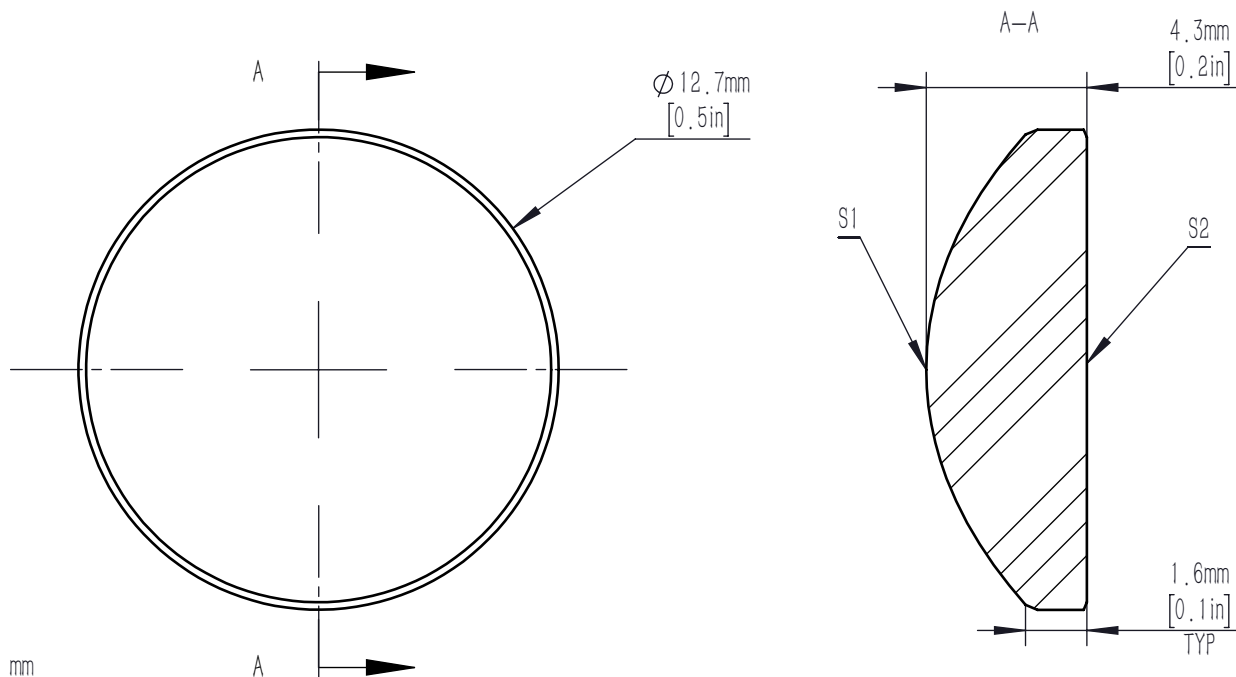
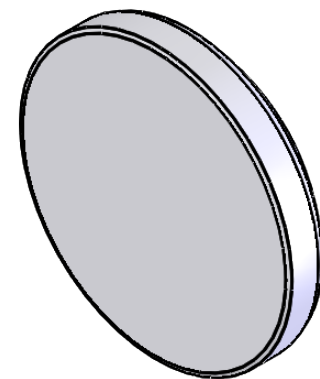


	R	k	A4	A6	A8	A10	A12	A14	A16
S1	7.77	-1	9.8464319e-05	-6.9905851e-08	-2.3874994e-09	-1.1328583e-11	8.7255438e-14	2.8967313e-16	1.7632112e-18
S2	INFINITE	-	-	-	-	-	-	-	-

$$Z = \frac{Y^2}{R(1 + \sqrt{1 - (1 + K)Y^2/R^2})} + A_4 Y^4 + A_6 Y^6 + A_8 Y^8 + A_{10} Y^{10} + A_{12} Y^{12} + A_{14} Y^{14} + A_{16} Y^{16}$$



NOTES:

- MATERIAL: S-LAH64
- DESIGN WAVELENGTH: 780.0 nm
- NUMERICAL APERTURE: 0.50
- FOCAL LENGTH: 10.0 mm
- FOCAL LENGTH TOLERANCE: $\pm 1\%$
- BACK FOCAL LENGTH(REF): BF=7.6 mm
- CLEAR APERTURE: $>90\%$ CA
- DIAMETER TOLERANCE: $+0.0/-0.1$ mm
- THICKNESS TOLERANCE: ± 0.1 mm
- CHAMFER: 0.2 mm, 45°
- WAVEFRONT ERROR(RMS): $<0.5 \mu\text{m}$
- SAG DEVIATION(POWER, S1): $\pm 7.5 \mu\text{m}$
- SURFACE IRREGULARITY(S1): <3 FRINGES
- SURFACE FLATNESS(S2): $\lambda/4$
- SURFACE QUALITY: 60-40 SCRATCH-DIG
- CENTRATION: <3 arcmin
- DAMAGE THRESHOLD: 6 J/cm²@532 nm, 10 ns, 10 HZ, $\phi 0.345$ mm
- AR COATING (S1, S2): Ravg $<0.5\%$ @400-700 nm, 6° AOI

DRAWING PROJECTION			LBTEK			
	NAME	DATE	AC7908-A			
DRAWN	BSHU	Aug./1st/24	ASPHERIC LENS			
APPROVAL	WCHENG	Aug./1st/24	MATERIAL	WEIGHT	SCALE	REV
FOR INFORMATION ONLY NOT FOR MANUFACTURING PURPOSES			S-LAH64	0.89g	5:1	A