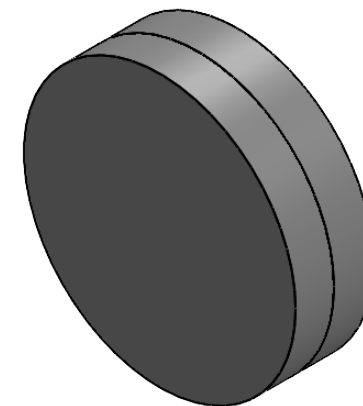


剖面 A-A



NOTES:

1. DESIGN WAVELENGTH: 488 nm, 707 nm&1064 nm
2. CLEAR APERTURE:  $>90\%$ CA
3. OPERATION WAVELENGTH: 400 nm-1100 nm
4. DIAMETER TOLERANCE:  $+0.0/-0.1\text{ mm}$
5. THICKNESS TOLERANCE:  $\pm 0.1\text{ mm}$
6. FOCAL LENGTH:  $200.0\text{ mm} \pm 1\% @ 707\text{ nm}$
7. BACK FOCAL LENGTH: 194.15 mm
8. SURFACE QUALITY (S/D) (S1,S2) : 60/40
9. SURFACE POWER (S1,S2) :  $3\lambda/2 @ 632.8\text{ nm}$
10. SURFACE IRREGULARITY (S1,S2) :  $\lambda/4 @ 632.8\text{ nm}$
11. CENTRATION:  $<3\text{ arcmin}$
12. CHAMFER:  $<0.2\text{ mm}, 45^\circ$
13. AR COATING (S1,S2) :  $R_{\text{avg}} < 1\% @ 400\text{ nm}-1100\text{ nm}, 0^\circ\text{ AOI}$

	MATERIAL
①	N-LAK22
②	N-SF10

DRAWING PROJECTION				<b>LBTEK</b>			
	NAME	DATE	AD418-AB				
DRAWN	SHAN	SEP./9th/24	ACHROMATIC DOUBLETS				
APPROVAL	WCHENG	SEP./9th/24	MATERIAL	WEIGHT	SCALE	REV	
FOR INFORMATION ONLY NOT FOR MANUFACTURING PURPOSES			N-LAK22/N-SF10	13.42 g	2:1	A	