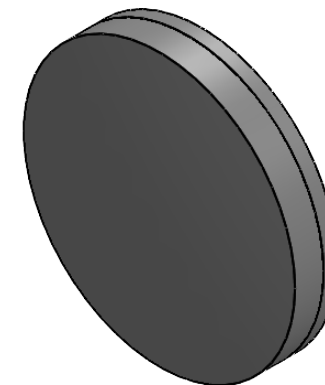


剖面 A-A



NOTES:

1. DESIGN WAVELENGTH: 488 nm, 707 nm & 1064 nm
2. CLEAR APERTURE: $>90\%CA$
3. OPERATION WAVELENGTH: 400 nm–1100 nm
4. DIAMETER TOLERANCE: $+0.0/-0.1\text{ mm}$
5. THICKNESS TOLERANCE: $\pm 0.1\text{ mm}$
6. FOCAL LENGTH: $80.0\text{ mm} \pm 1\% @ 707\text{ nm}$
7. BACK FOCAL LENGTH: 72.73 mm
8. SURFACE QUALITY (S/D) (S1, S2) : 40/20
9. SURFACE POWER (S1, S2) : $3\lambda/2 @ 632.8\text{ nm}$
10. SURFACE IRREGULARITY (S1, S2) : $\lambda/4 @ 632.8\text{ nm}$
11. CENTRATION: $<3\text{ arcmin}$
12. CHAMFER: $<0.2\text{ mm}, 45^\circ$
13. AR COATING (S1, S2) : $R_{\text{avg}} < 1\% @ 400\text{ nm} - 1100\text{ nm}, 0^\circ\text{ AOI}$

	MATERIAL
①	H-LAK10
②	H-ZF7LA

DRAWING PROJECTION				LBTEK			
	NAME	DATE	AD507-AB				
DRAWN	SHAN	SEP./9th/24	ACHROMATIC DOUBLETS				
APPROVAL	WCHENG	SEP./9th/24	MATERIAL	WEIGHT	SCALE	REV	
FOR INFORMATION ONLY NOT FOR MANUFACTURING PURPOSES			H-LAK10/H-ZF7LA	83.76 g	1:1	A	