

Fiber receptacle
type FC-APC
(wide key)

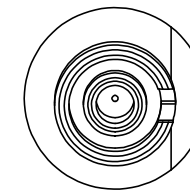
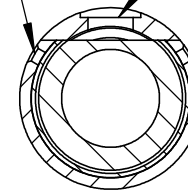
Ø 12.0mm
[0.47in]

Pin screw for additional locking of the fiber ferrule:
- before pulling the FC-APC-connector;
unlock the pin screw.
-before inserting the FC-APC-connector;
make sure the ferrule is not blocked

clamp screws
for locking optics position (2x120°)

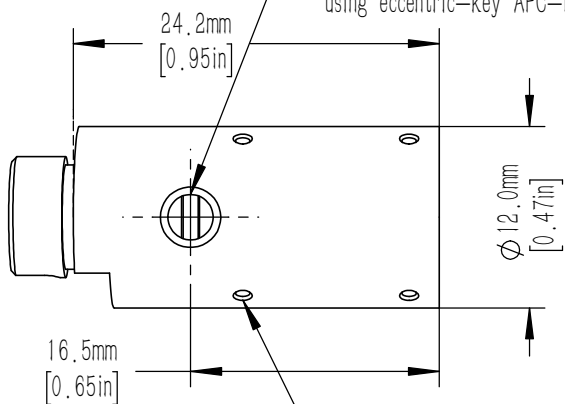
A-A

adjustment of focus setting
using eccentric-key AFC-FAPC-6

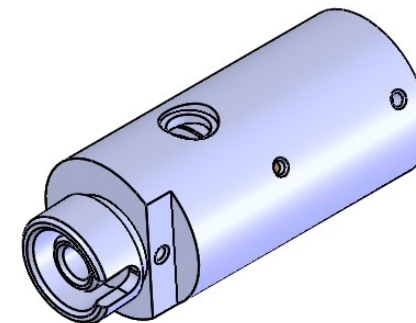


clamp screws
for locking of lens attachments (3x120°)

adjustment of focus setting
using eccentric-key AFC-FAPC-6



clamp screws for locking optics position (2x120°)



notes:

- 1.focal length: 4.6 mm
- 2.Waist beam spot diameter: 1.0 mm@780HP
- 3.NA:0.5
- 4.Lens material:D-ZK3
- 5.Interface type: FC/APC
- 6.Lens coating: 600 - 1050 nm

DRAWING PROJECTION			LBTEK			
	NAME	DATE	ADFCB-4.6-APC			
DRAWN	BSHU	Feb./3rd/24	FIBER COLLIMATOR			
APPROVAL	WCHENG	Feb./3rd/24	MATERIAL	WEIGHT	SCALE	REV
FOR INFORMATION ONLY NOT FOR MANUFACTURING PURPOSES			N/A	0.004 Kg	2:1	A