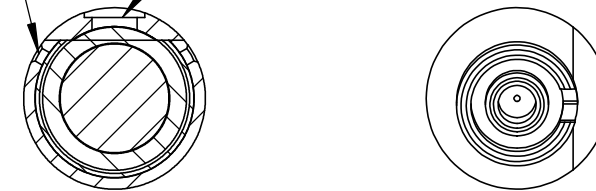


Fiber receptacle
type FC-APC
(wide key)

clamp screws
for locking optics position (2x120°)

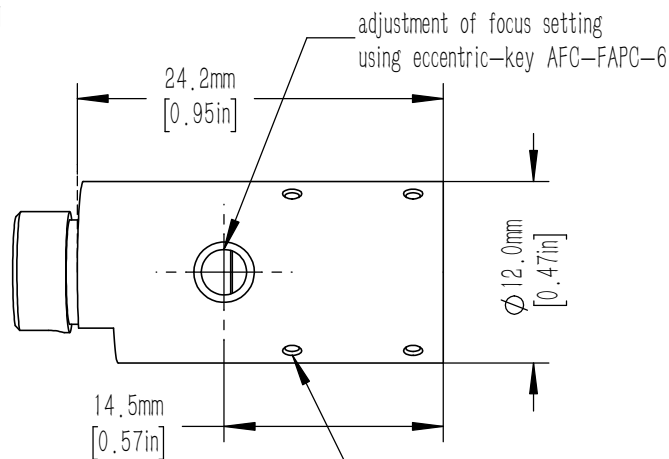
A-A

adjustment of focus setting
using eccentric-key AFC-FAPC-6

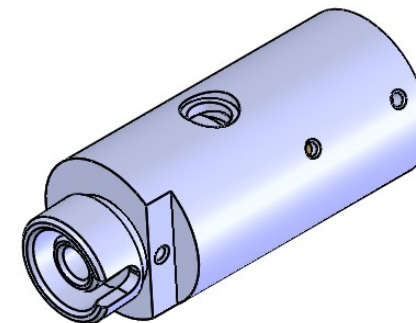


Pin screw for additional locking of the fiber ferrule:
- before pulling the FC-APC-connector;
unlock the pin screw.
-before inserting the FC-APC-connector;
make sure the ferrule is not blocked

clamp screws
for locking of lens attachments (3x120°)



clamp screws for locking optics position (2x120°)



notes:

- 1.focal length: 11.0 mm
- 2.Waist beam spot diameter: 2.14 mm@SMF-28E
- 3.NA:0.3
- 4.Lens material;D-ZK3
- 5.Interface type: FC/APC
- 6.Lens coating: 1050 - 1700 nm

DRAWING PROJECTION			LBTEK			
	NAME	DATE	ADFCC-11.0-APC			
DRAWN	BSHU	Jan./6th/24	FIBER COLLIMATOR			
APPROVAL	WCHENG	Jan./6th/24	MATERIAL	WEIGHT	SCALE	REV
FOR INFORMATION ONLY NOT FOR MANUFACTURING PURPOSES			N/A	0.004 Kg	2:1	A