

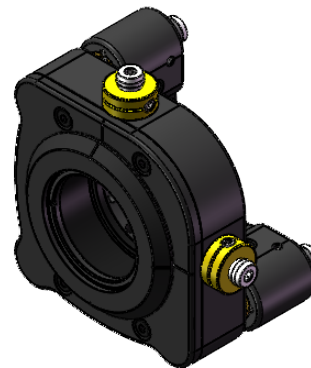
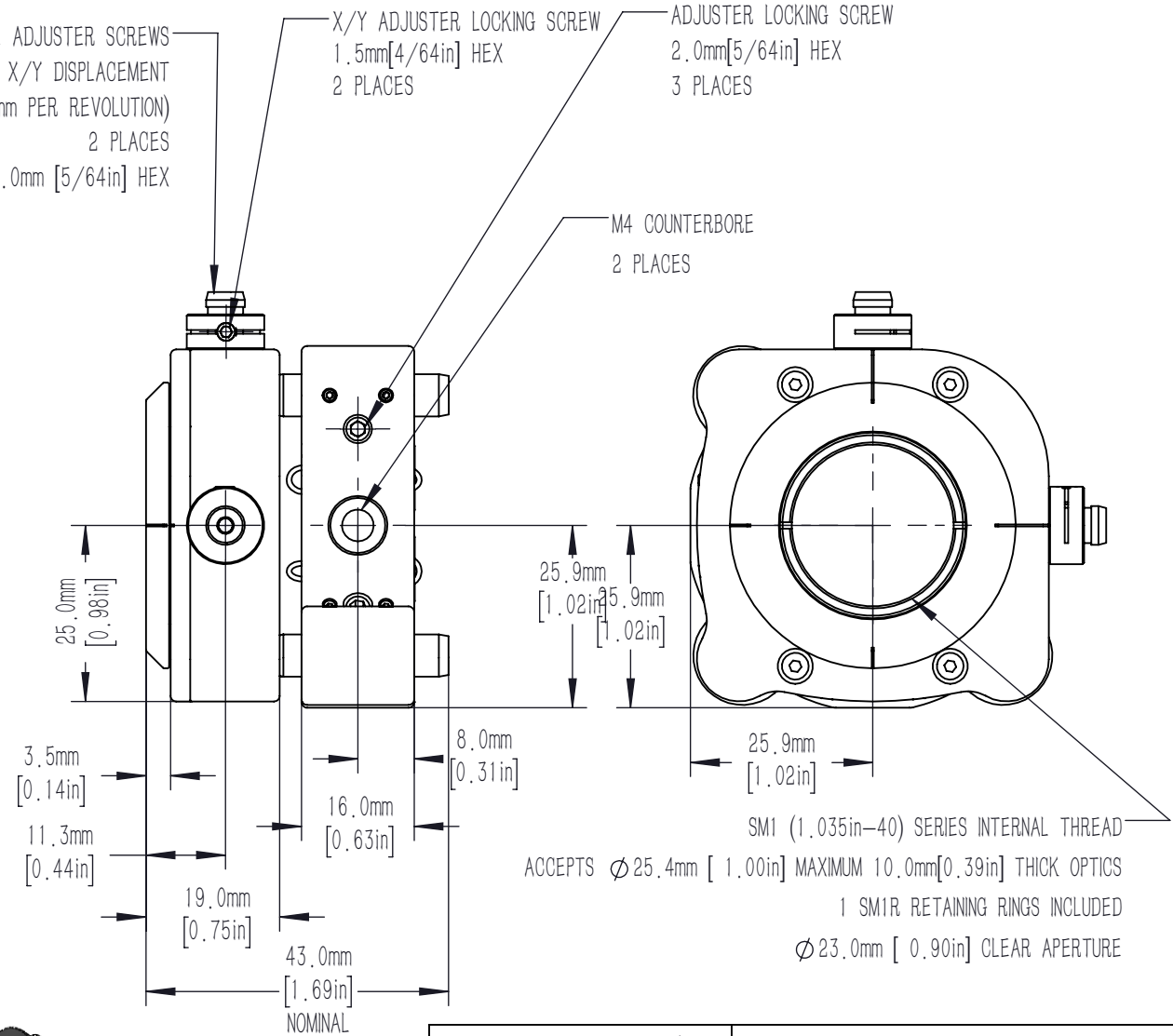
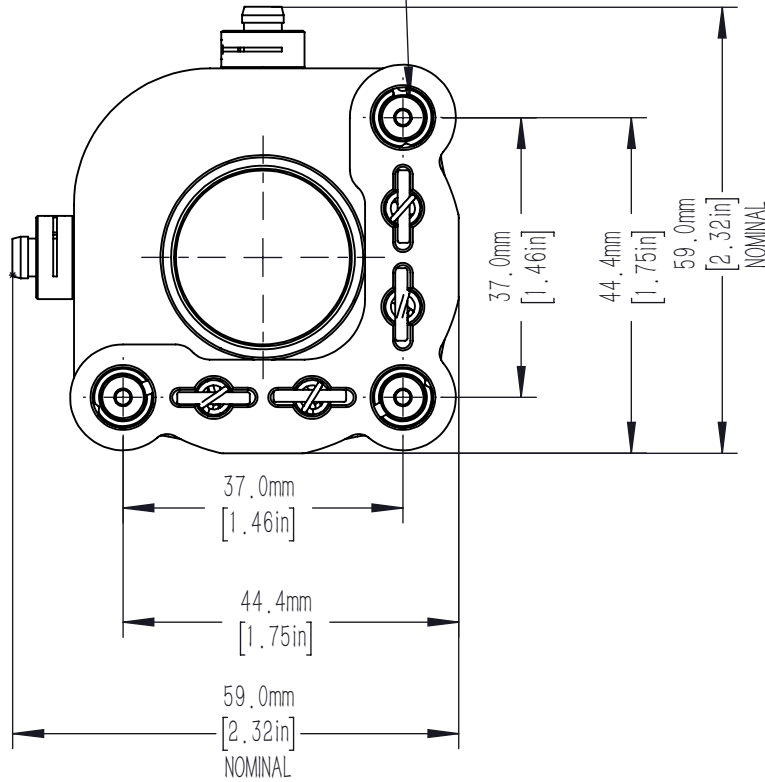
M6X0.25 LOCKABLE ADJUSTER SCREWS
 PROVIDES +/-4° TOTAL ANGULAR DISPLACEMENT
 (0.4° PER REVOLUTION)
 3 PLACES
 2.0mm [5/64in] HEX

M5X0.25 LOCKABLE ADJUSTER SCREWS
 PROVIDES +/- 1mm TOTAL X/Y DISPLACEMENT
 (0.25mm PER REVOLUTION)
 2 PLACES
 2.0mm [5/64in] HEX

X/Y ADJUSTER LOCKING SCREW
 1.5mm[4/64in] HEX
 2 PLACES

ADJUSTER LOCKING SCREW
 2.0mm[5/64in] HEX
 3 PLACES

M4 COUNTERBORE
 2 PLACES



DRAWING PROJECTION			LBTEK			
NAME	DATE	AMM5-1A-A				
DRAWN	CZH	JAN./29th/24	5-AXIS MIRROR MOUNT WITH SM1 THREAD FOR Ø25.4mm OPTICS			
APPROVAL	HDE	JAN./29th/24	MATERIAL	WEIGHT	SCALE	REV
FOR INFORMATION ONLY NOT FOR MANUFACTURING PURPOSES			N/A	0.31 Kg	1:2	A