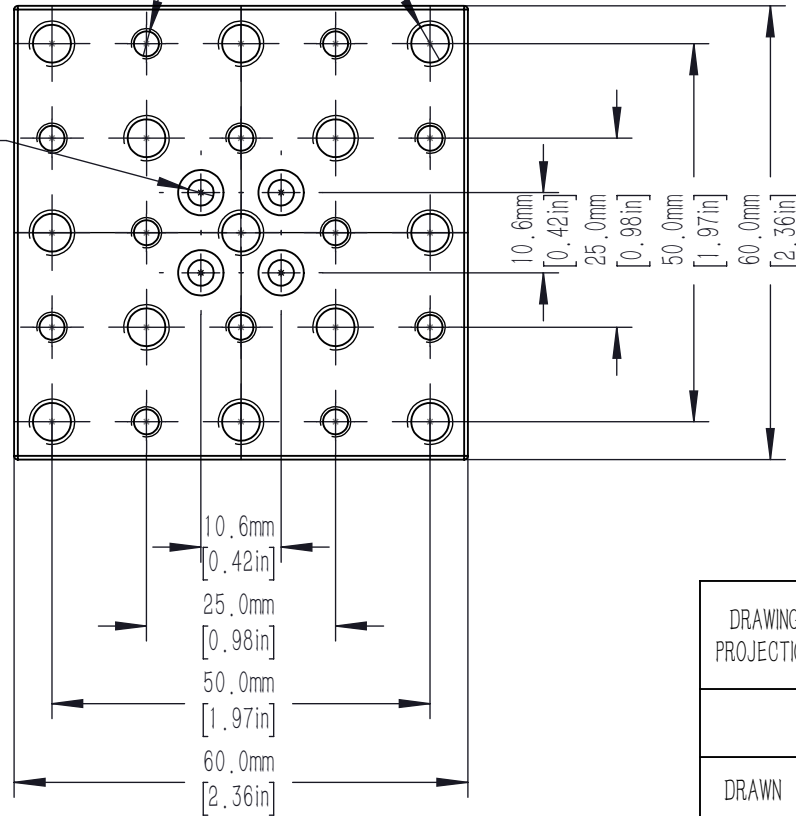


12 x M4 - 6H 完全贯穿  
 $\varnothing$  3.300mm [0.13in] 完全贯穿

13 x M6 - 6H 完全贯穿  
 $\varnothing$  5.000mm [0.20in] 完全贯穿

4 x  $\varnothing$  3.400mm [0.13in] 完全贯穿  
 $\square$   $\varnothing$  6.000mm [0.24in]  $\nabla$  3.400mm [0.13in]



DRAWING PROJECTION			<b>LBTEK</b>			
	NAME	DATE				
DRAWN	YWE	OCT./7th/23	ADAPTER PLATE			
APPROVAL	ZXU	OCT./7th/23	MATERIAL	WEIGHT	SCALE	REV
FOR INFORMATION ONLY NOT FOR MANUFACTURING PURPOSES			N/A	0.051 Kg	1:1	B