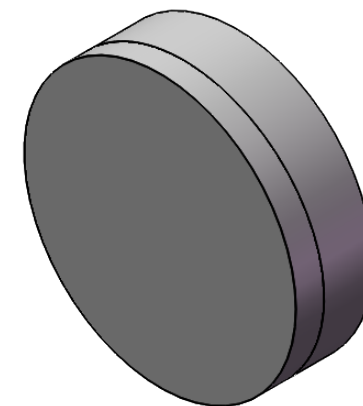
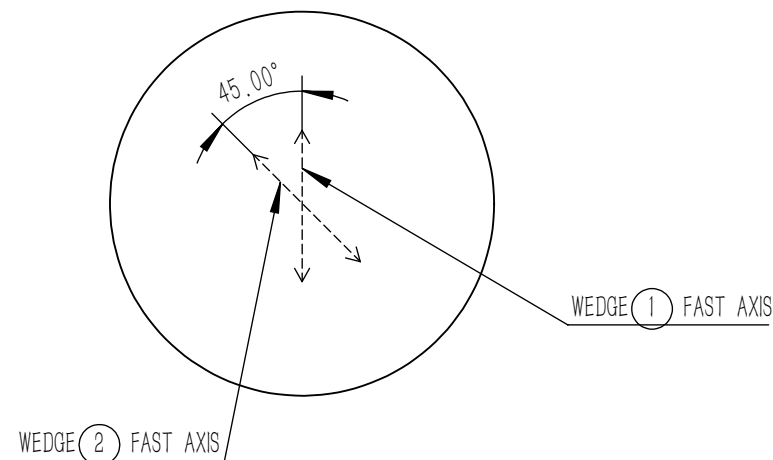
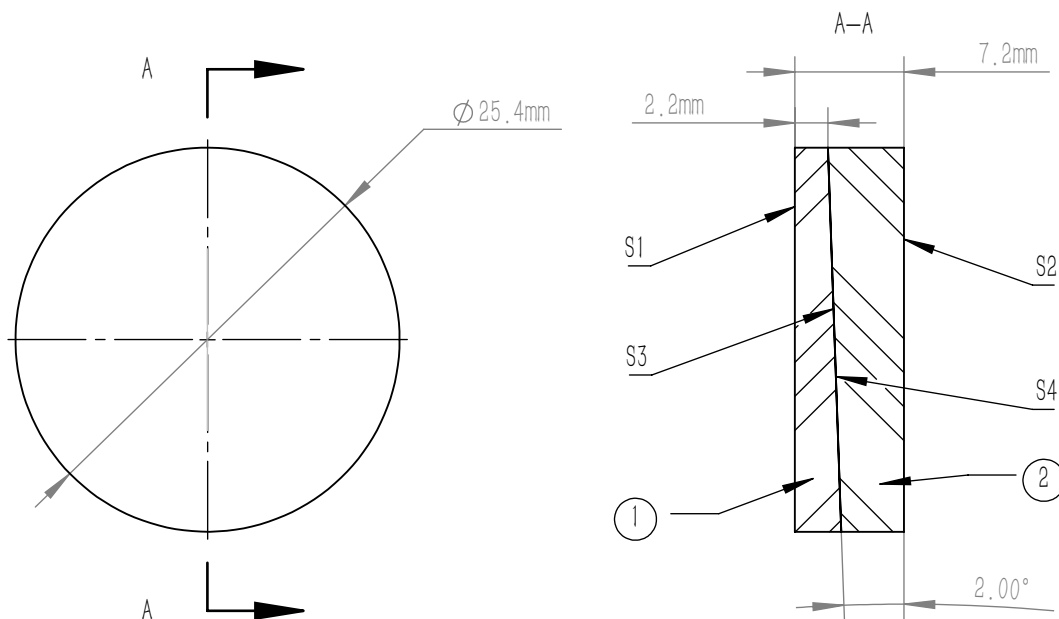


NUMBER	PART DESCRIPTION	MATERIAL
①	WEDGE	QUARTZ
②	WEDGE	QUARTZ



NOTES

1. OPERATION WAVELENGTH: 400 nm–700 nm
2. COATING(S1, S2): AR COATING,  $R_{avg} < 0.5\%$  @ 400 nm–700 nm,  $0^\circ$  AOI
3. GLUED(S3, S4): NOA61
4. SURFACE QUALITY(S1, S2): 20/10(S/D)
5. WAVEFRONT ERROR(RMS):  $\lambda/4$  @ 633 nm
6. CLEAR APERTURE(S1, S2):  $>90\%$  CA
7. CHAMFER: 0.2 mm,  $45^\circ$
8. THICKNESS TOLERANCE:  $\pm 0.1$  mm
9. DIAMETER TOLERANCE:  $+0.0$  mm /  $-0.1$  mm
10. WEDGE ANGLE TOLERANCE:  $\pm 0.1^\circ$
11. PARALLELISM(S1, S2):  $< 1$  arcmin
12. OTHER SURFACES: FINE GROUND
13. FAST AXIS ANGLE OF TWO WEDGES:  $45^\circ \pm 1^\circ$
14. FAST AXIS MARK ON THE EDGE OF THE WEDGE

DRAWING PROJECTION			<b>LBTEK</b>			
	NAME	DATE				
DRAWN	LZHOU	Aug./26th/24	ACHROMATIC DEPOLARIZER $\phi 25.4$ mm, AR COATING, 400 nm–700 nm			
APPROVAL	WCHENG	Aug./26th/24	MATERIAL	WEIGHT	SCALE	REV
FOR INFORMATION ONLY NOT FOR MANUFACTURING PURPOSES			QUARTZ	9.7 g	2:1	A