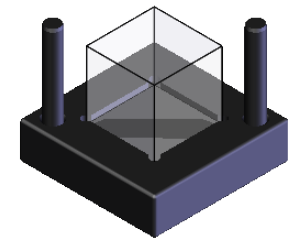
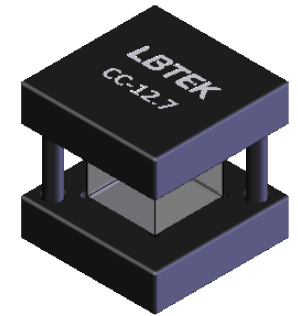
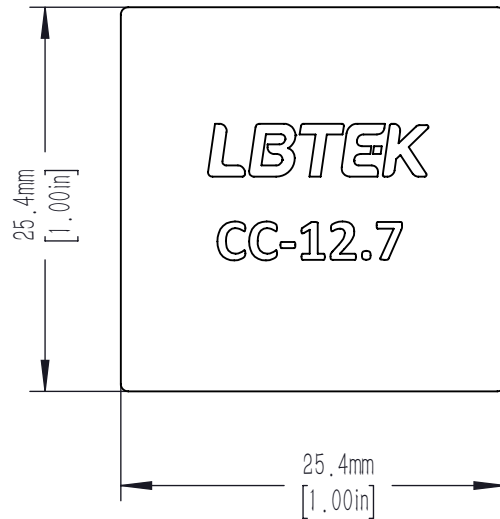


CLEAR APERTURE PROVIDES >80% ENTRANCE FACE FOR 12.7mm [0.50in] BEAMSPLITTER



BEAMSPLITTER CUBE SHOWN ONLY (NOT INCLUDED)

NOTE:

1. ADAPTER IS MOUNTED INTO CM-3 (30 mm CAGE CUBE).
2. CAREFULLY INSERT AND CLAMP THE BEAMSPLITTER CUBE ADAPTER INTO CM-3.
3. DO NOT OVER TIGHTEN THE ADAPTER INTO CM-3, BECAUSE OVER TIGHTENING CAN LEAD TO CRACKS OR CREATE STRESS FACTURES IN THE BEAMSPLITTERS.

DRAWING PROJECTION			LBTEK			
	NAME	DATE	CC-12.7			
DRAWN	ZHE	JUN./25th/19	12.7mm (0.50in) BEAMSPLITTER CUBE ADAPTER			
APPROVAL	LDAI	JUN./25th/19	MATERIAL	WEIGHT	SCALE	REV
FOR INFORMATION ONLY NOT FOR MANUFACTURING PURPOSES			N/A	0.07 Kg	2:1	C