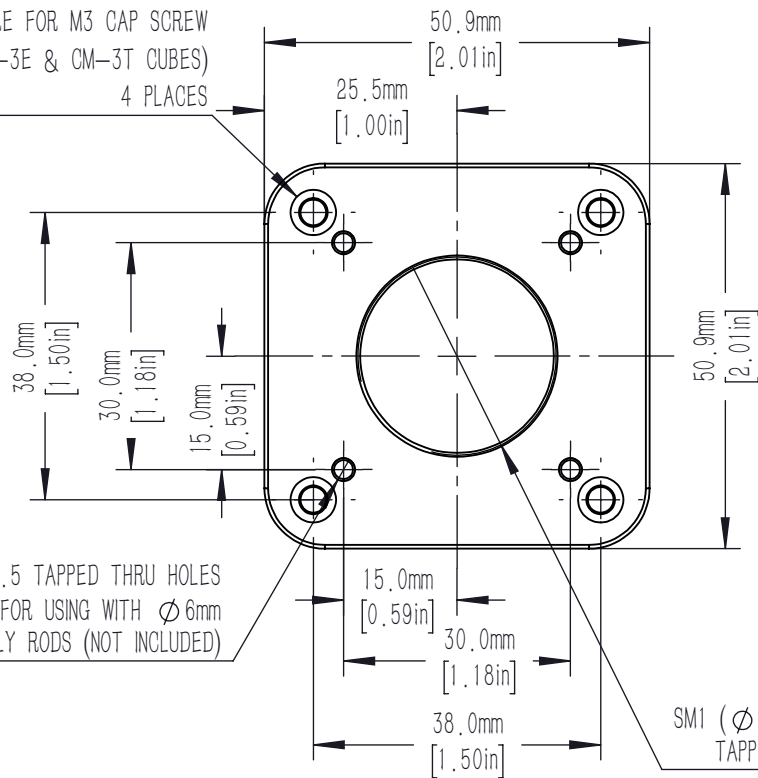
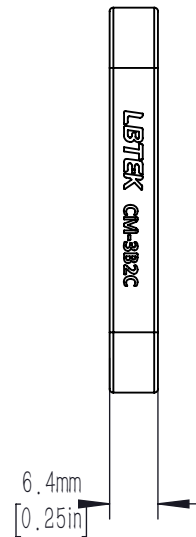
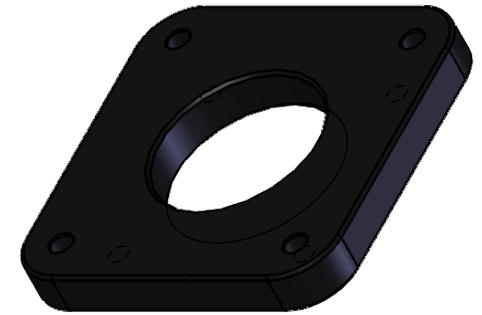


COUNTERBORE FOR M3 CAP SCREW
(FOR MOUNTING ON CM-3E & CM-3T CUBES)
4 PLACES



M3x0.5 TAPPED THRU HOLES
FOR USING WITH ϕ 6mm
CAGE ASSEMBLY RODS (NOT INCLUDED)

SM1 (ϕ 1.035-40) SERIES
TAPPED THRU HOLE



DRAWING PROJECTION			LBTEK			
NAME	DATE	CM-3B2C				
DRAWN	ZHE	JUN./25th/19	SM1 THREADED ADPTER PLATE			
APPROVAL	LDAI	JUN./25th/19	MATERIAL	WEIGHT	SCALE	REV
FOR INFORMATION ONLY NOT FOR MANUFACTURING PURPOSES			N/A	0.03 Kg	1:1	B