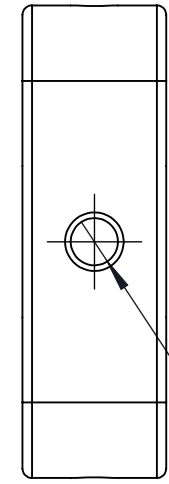


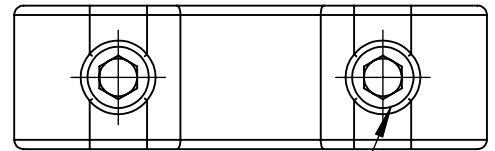
M2.5 CAP SCREW THRU HOLE  
FOR MOUNTING TO 16mm CAGE CUBE  
(NOT INCLUDED)  
4 PLACES

$\phi 0.16$ in [ 4.0mm] THRU  
FOR USE WITH  $\phi 4$ mm SERIES RODS  
(NOT INCLUDED)  
4 PLACES

M10.5 x 0.5 SERIES INTERNAL THREAD  
RETAINING 2PCS RING INCLUDED  
 $\phi 0.35$ in [ $\phi 8.8$ mm] CLEAR APERTURE



2 x M3 - 6H  $\nabla 5.00$ mm[0.20in]  
 $\phi 2.50$ mm[0.10in]  $\nabla 6.00$ mm[0.24in]  
BOTH ENDS



4xM4 SET SCREW  
2.0mm [0.08in] HEX  
BOTH ENDS

DRAWING PROJECTION			<b>LBTEK</b>			
	NAME	DATE				
DRAWN	HDE	Jun./15th/23	M10.5 x 0.5 THREADED THRU 16mm CAGE PLATE			
APPROVAL	ZXU	Jun./15th/23	MATERIAL	WEIGHT	SCALE	REV
FOR INFORMATION ONLY NOT FOR MANUFACTURING PURPOSES			N/A	0.010 Kg	5:2	C