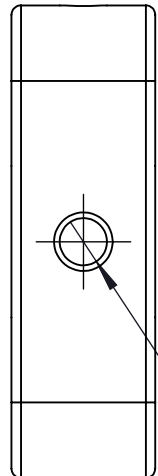
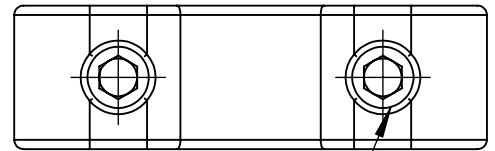


M2.5 CAP SCREW THRU HOLE  
FOR MOUNTING TO 16mm CAGE CUBE  
(NOT INCLUDED)  
4 PLACES

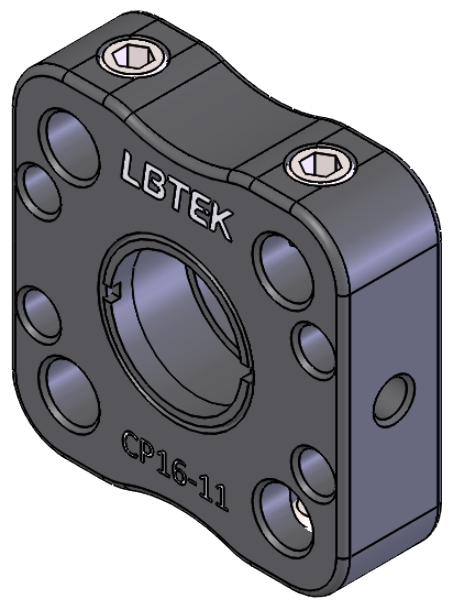


2 x M3 - 6H ∇ 5.00mm [0.20in]  
∅ 2.50mm [0.10in] ∇ 5.50mm [0.22in]  
BOTH ENDS

M11.5 x 0.5 SERIES INTERNAL THREAD  
RETAINING 2PCS RING INCLUDED  
φ 0.39in [ φ 9.8mm] CLEAR APERTURE



4xM4 SET SCREW  
2.0mm [0.08in] HEX  
BOTH ENDS



DRAWING PROJECTION			<b>LBTEK</b>			
	NAME	DATE				
DRAWN	HDE	Jun./15th/23	M11.5 x 0.5 THREADED THRU 16mm CAGE PLATE			
APPROVAL	ZXU	Jun./15th/23	MATERIAL	WEIGHT	SCALE	REV
FOR INFORMATION ONLY NOT FOR MANUFACTURING PURPOSES			N/A	0.009 Kg	5:2	C