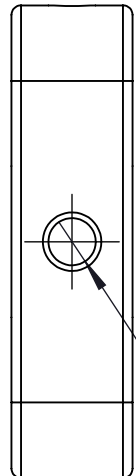
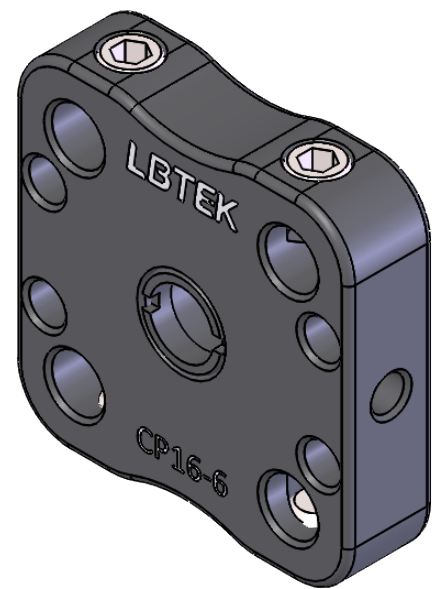


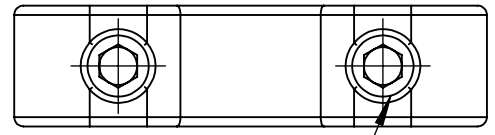
M2.5 CAP SCREW THRU HOLE  
FOR MOUNTING TO 16mm CAGE CUBE  
(NOT INCLUDED)  
4 PLACES



2 x M3 - 6H  $\nabla$  5.00mm [0.20in]  
 $\varnothing$  2.50mm [0.10in]  $\nabla$  6.00mm [0.24in]  
BOTH ENDS

$\varnothing$  0.16in [ 4.0mm] THRU  
FOR USE WITH  $\varnothing$  4mm SERIES RODS  
(NOT INCLUDED)  
4 PLACES

M6.5 x 0.5 SERIES INTERNAL THREAD  
RETAINING 2PCS RING INCLUDED  
 $\varnothing$  0.19in [  $\varnothing$  4.8mm] CLEAR APERTURE



4xM4 SET SCREW  
2.0mm [0.08in] HEX  
BOTH ENDS

|  |      |              |   |          |       |     |
|--|------|--------------|---|----------|-------|-----|
| DRAWING PROJECTION                                     |      |              | <b>LBTEK</b>                                |          |       |     |
|  | NAME | DATE         |   |          |       |     |
| DRAWN  | HDE  | Jun./15th/23 | M6.5 x 0.5 THREADED THRU<br>16mm CAGE PLATE |          |       |     |
| APPROVAL   | ZXU  | Jun./15th/23 | MATERIAL                                    | WEIGHT   | SCALE | REV |
| FOR INFORMATION ONLY<br>NOT FOR MANUFACTURING PURPOSES |      |              | N/A   | 0.009 Kg | 5:2   | C   |