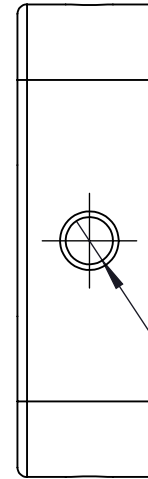


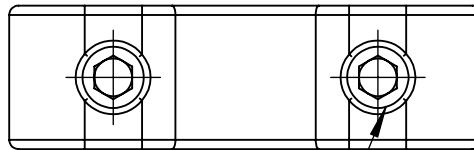
M2.5 CAP SCREW THRU HOLE
FOR MOUNTING TO 16mm CAGE CUBE
(NOT INCLUDED)
4 PLACES

$\phi 0.16$ in [4.0mm] THRU
FOR USE WITH $\phi 4$ mm SERIES RODS
(NOT INCLUDED)
4 PLACES

M9.5 x 0.5 SERIES INTERNAL THREAD
RETAINING 2PCS RING INCLUDED
 $\phi 0.31$ in [$\phi 7.8$ mm] CLEAR APERTURE



2 x M3 - 6H ∇ 5.00mm[0.20in]
 $\phi 2.50$ mm[0.10in] ∇ 6.00mm[0.24in]
BOTH ENDS



4xM4 SET SCREW
2.0mm [0.08in] HEX
BOTH ENDS

| | | | | | | |
|--|------|--------------|---|----------|-------|-----|
| DRAWING PROJECTION | | | LBTEK | | | |
| | NAME | DATE | | | | |
| DRAWN | HDE | Jun./15th/23 | M9.5 x 0.5 THREADED THRU 16mm CAGE PLATE | | | |
| APPROVAL | ZXU | Jun./15th/23 | MATERIAL | WEIGHT | SCALE | REV |
| FOR INFORMATION ONLY NOT FOR MANUFACTURING PURPOSES | | | N/A | 0.010 Kg | 5:2 | C |