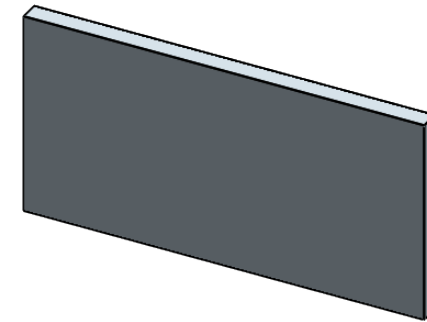


剖面 A-A



NOTES

1. MATERIAL: N-BK7
2. DESIGN WAVELENGTH: 587.6 nm
3. WORKING WAVELENGTH: 400 nm-700 nm
4. FOCAL LENGTH: 200.0 mm
5. FOCAL LENGTH TOLERANCE(REF):  $\pm 1\%$
6. BACK FOCAL LENGTH(REF):  $bf=196.9$  mm
7. CLEAR APERTURE:  $>90\%$  OF SURFACE LENGTH AND HEIGHT
8. DIAMETER TOLERANCE:  $+0.0/-0.1$  mm
9. THICKNESS TOLERANCE:  $\pm 0.2$  mm
10. CHAMFER:  $< 0.2$  mm,  $45^\circ$
11. SURFACE QUALITY: 60/40 SCRATCH/DIG
12. SURFACE FLATNESS(S1):  $\lambda/2$
13. SURFACE POWER(S2):  $3\lambda/2$
14. SURFACE IRREGULARITY(S2):  $\lambda/4(S2 H), \lambda/4(S2 L)$
15. CENTRATION:  $\leq 5$  arcmin
16. AR COATING:  $R_{avg} < 0.5\%$  @ 400 nm-700 nm,  $6^\circ$  AOI

DRAWING PROJECTION			<b>LBTEK</b>			
		NAME	DATE	CY108215-A		
DRAWN	BSHU	JUL./29th/24	$H \times L = 30.0$ mm $\times$ $60.0$ mm, $f = 300.0$ mm PLANO CONVEX CYLINDRICAL LENS AR COATING 400-700 nm			
APPROVAL	WCHENG	JUL./29th/24	MATERIAL	WEIGHT	SCALE	REV
FOR INFORMATION ONLY NOT FOR MANUFACTURING PURPOSES			N-BK7	16.95g	1:1	C