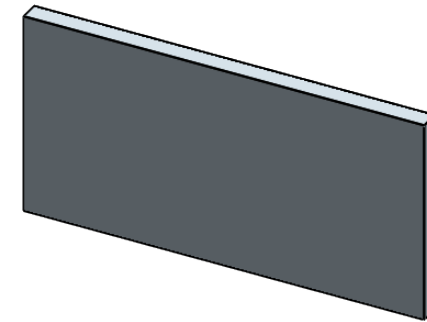


剖面 A-A



NOTES

1. MATERIAL: N-BK7
2. DESIGN WAVELENGTH: 587.6 nm
3. WORKING WAVELENGTH: 700 nm-1100 nm
4. FOCAL LENGTH: 200.0 mm
5. FOCAL LENGTH TOLERANCE(REF): $\pm 1\%$
6. BACK FOCAL LENGTH(REF): $bf=196.9$ mm
7. CLEAR APERTURE: $>90\%$ OF SURFACE LENGTH AND HEIGHT
8. DIAMETER TOLERANCE: $+0.0/-0.1$ mm
9. THICKNESS TOLERANCE: ± 0.2 mm
10. CHAMFER: < 0.2 mm, 45°
11. SURFACE QUALITY: 60/40 SCRATCH/DIG
12. SURFACE FLATNESS(S1): $\lambda/2$
13. SURFACE POWER(S2): $3\lambda/2$
14. SURFACE IRREGULARITY(S2): $\lambda/4(S2 H), \lambda/4(S2 L)$
15. CENTRATION: ≤ 5 arcmin
16. AR COATING: $R_{avg} < 0.5\%$ @ 700 nm-1100 nm, 6° AOI

DRAWING PROJECTION			LBTEK			
		NAME	DATE	CY108215-B		
DRAWN	BSHU	JUL./29th/24	$H \times L = 30.0$ mm \times 60.0 mm, $f = 300.0$ mm PLANO CONVEX CYLINDRICAL LENS AR COATING 700-1100 nm			
APPROVAL	WCHENG	JUL./29th/24	MATERIAL	WEIGHT	SCALE	REV
FOR INFORMATION ONLY NOT FOR MANUFACTURING PURPOSES			N-BK7	16.95g	1:1	C