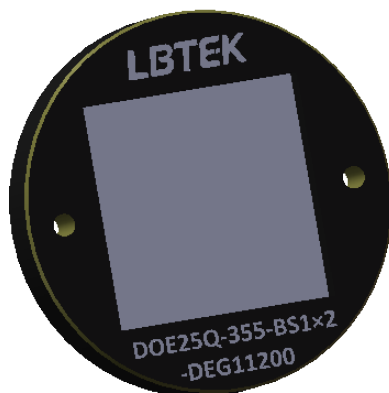


NOTE:

1. COMPONENT MATERIAL: UVFS
2. CLEAR APERTURE:  $\varnothing 15$  mm
3. DIAMETER TOLERANCE: 0.00/-0.05 mm
4. WORKING WAVELENGTH: 355 nm
5. REFRACTIVE INDEX: 1.476@355 nm
6. SURFACE QUALITY: 60/40
7. SPLITTING MOD: 1x2
8. SEPARATION ANGLE: 11.2°



DRAWING PROJECTION			<b>LBTEK</b>			
	NAME	DATE	DOE25Q-355-BS1X2-DEG11200			
DRAWN	BQWang	JAN./21th/26	Quartz Beam Splitter			
APPROVAL	JKFu	JAN./21th/26	MATERIAL	WEIGHT	SCALE	REV
FOR INFORMATION ONLY NOT FOR MANUFACTURING PURPOSES			N/A	3 g	2:1	A