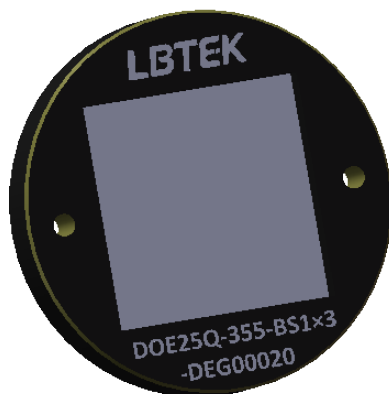


NOTE:

1. COMPONENT MATERIAL: UVFS
2. CLEAR APERTURE: \varnothing 15 mm
3. DIAMETER TOLERANCE: 0.00/−0.05 mm
4. WORKING WAVELENGTH: 355 nm
5. REFRACTIVE INDEX: 1.476@355 nm
6. SURFACE QUALITY: 60/40
7. SPLITTING MOD.: 1 × 3
8. SEPARATION ANGLE: 0.02°



DRAWING PROJECTION			LBTEK			
	NAME	DATE	DOE25Q-355-BS1X3-DEG00020			
DRAWN	BQWang	JAN./21th/26	Quartz Beam Splitter			
APPROVAL	JKFu	JAN./21th/26	MATERIAL	WEIGHT	SCALE	REV
FOR INFORMATION ONLY NOT FOR MANUFACTURING PURPOSES			N/A	3 g	2:1	A