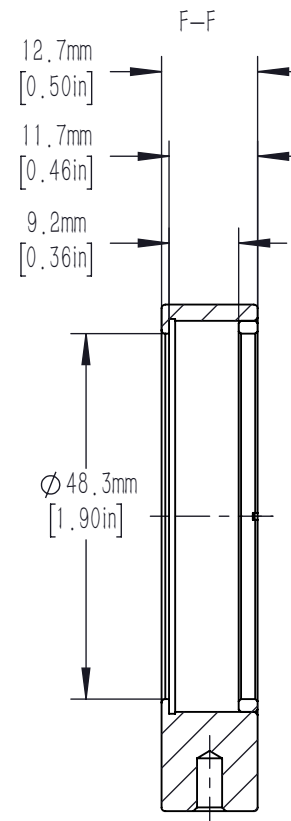


SM2(Ø2.035in-40) SERIES INTERNAL THREAD
ACCEPTS Ø 50.8mm[2.00in] MAXIMUM 9.2mm[0.36in] THICK OPTICS
1 SM2R RETAINING RING INCLUDED
Ø 48.3mm [Ø 1.90in] CLEAR APERTURE



DRAWING PROJECTION			LBTEK			
NAME	DATE					
			FLF2A			
DRAWN	YCH	JUL./25th/19	LENS MOUNT FOR Ø 50.8 mm OPTICS WITH INTERNAL SM2 THREAD			
APPROVAL	JCAO	JUL./25th/19	MATERIAL	WEIGHT	SCALE	REV
FOR INFORMATION ONLY NOT FOR MANUFACTURING PURPOSES			N/A	0.020 Kg	1:1	B