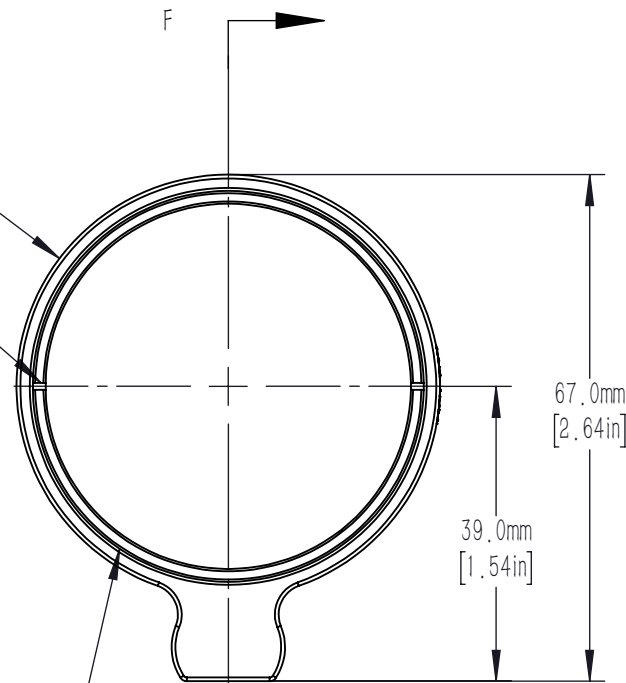


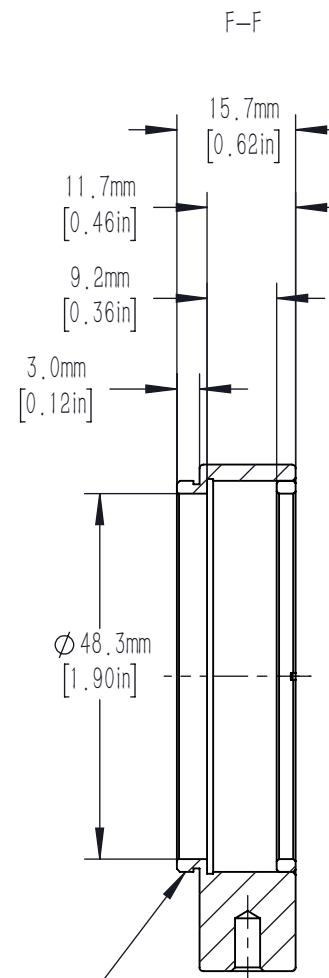
$\phi 56.0\text{mm}$   
[2.20in]

SPANNER WRENCH SLOTS  
FOR USE WITH OWR-2A  
(NOT INCLUDED)



SM2 ( $\phi 2.035\text{in}-40$ ) SERIES INTERNAL THREAD  
ACCEPTS  $\phi 50.8\text{mm}$  [2.00in] MAXIMUM 9.2mm [0.36in] THICK OPTICS  
1 SM2R RETAINING RING INCLUDED  
 $\phi 48.3\text{mm}$  [ $\phi 1.90\text{in}$ ] CLEAR APERTURE

SM2 ( $\phi 2.035\text{in}-40$ ) SERIES  
EXTERNAL THREAD



DRAWING PROJECTION			<b>LBTEK</b>			
NAME	DATE	FLFE2A				
DRAWN	YCH	JUL./25th/19	LENS MOUNT FOR $\phi 50.8$ mm OPTICS WITH EXTERNAL SM2 THREAD			
APPROVAL	JCAO	JUL./25th/19	MATERIAL	WEIGHT	SCALE	REV
FOR INFORMATION ONLY NOT FOR MANUFACTURING PURPOSES			N/A	0.022 Kg	1:1	B