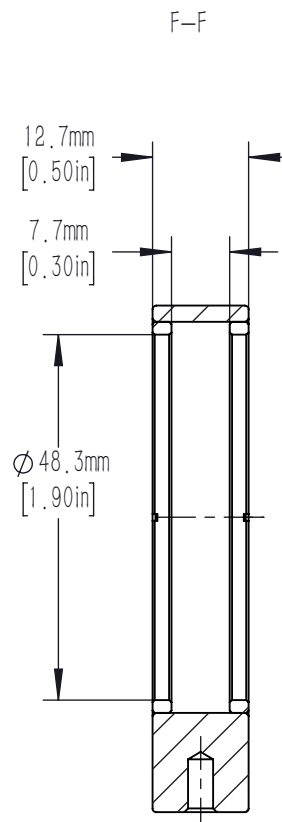


SM2( $\phi 2.035\text{in}-40$ ) SERIES INTERNAL THREAD  
ACCEPTS  $\phi 50.8\text{mm}$ [2.00in] MAXIMUM 7.7mm[0.30in] THICK OPTICS  
2 SM2R RETAINING RING INCLUDED  
 $\phi 48.3\text{mm}$  [ $\phi 1.90\text{in}$ ] CLEAR APERTURE



DRAWING PROJECTION			<b>LBTEK</b>			
NAME	DATE	FLFT2A				
DRAWN	YCH	JUL./25th/19	LENS MOUNT FOR $\phi 50.8$ mm OPTICS WITH SM2 THRU INTERNAL THREAD			
APPROVAL	JCAO	JUL./25th/19	MATERIAL	WEIGHT	SCALE	REV
FOR INFORMATION ONLY NOT FOR MANUFACTURING PURPOSES			N/A	0.021 Kg	1:1	B