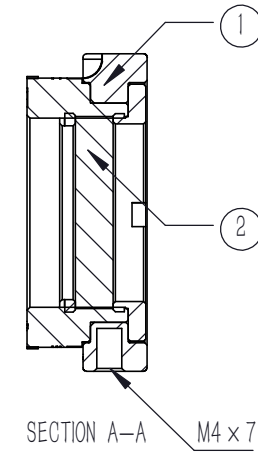


NUMBER	PART DESCRIPTION	MATERIAL
①	CRM-1AS	BLACK ANODIZED ALUMINUM
②	FLP25-VIS-M	BLACK ANODIZED ALUMINUM & N-BK7



NOTES

- OPERATION WAVELENGTH: 400 nm-700 nm
- EXTINCTION RATIO:
 >500:1@400 nm-450 nm
 >5000:1@450 nm-700 nm
- CLEAR APERTURE: $\phi 21.5$ mm
- SURFACE QUALITY (S/D) : 40/20
- COATING: $R_{avg} < 0.5\%$ @400 nm-700 nm

DRAWING PROJECTION			LBTEK			
NAME	DATE	FLP25-VIS-CRM				
DRAWN	LZHOU	JUN./6th/24	FILM LINEAR POLARIZER CRM-1AS, $\phi 25.4$ mm, 400 nm-700 nm			
APPROVAL	WCHENG	JUN./6th/24	MATERIAL	WEIGHT	SCALE	REV
FOR INFORMATION ONLY NOT FOR MANUFACTURING PURPOSES			BLACK ANODIZED ALUMINUM & N-BK7	38 g	1:1	A