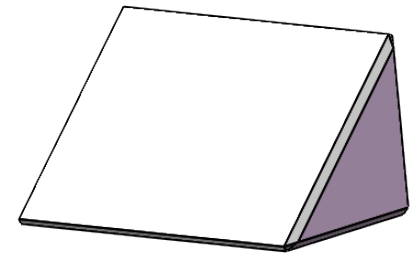
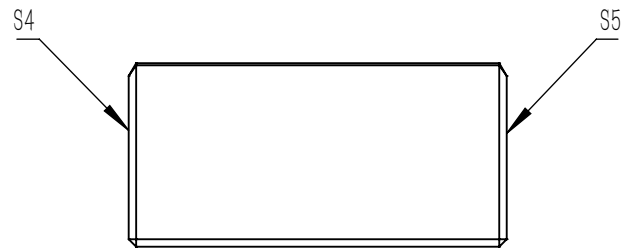
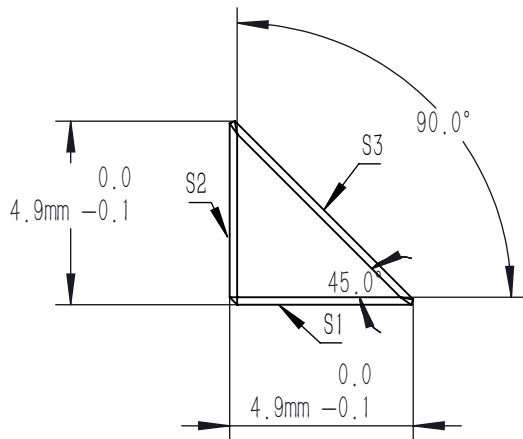


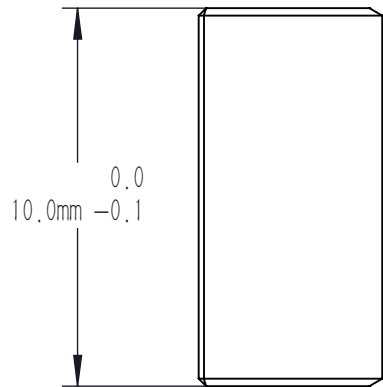
GLUED: NOA61

DRAWING PROJECTION			LBTEK			
	NAME	DATE	HRM10-AG			
DRAWN	LZHOU	Aug./12th/24	HOLLOW ROOF MIRROR L x W x H = 10.0 mm x 10.0 mm x 8.0 mm, AG: 450 nm - 20.0 μm			
APPROVAL	WCHENG	Aug./12th/24	MATERIAL	WEIGHT	SCALE	REV
FOR INFORMATION ONLY NOT FOR MANUFACTURING PURPOSES			Borofloat	1.3 g	5:1	A

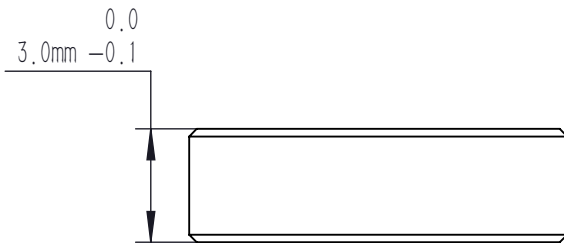
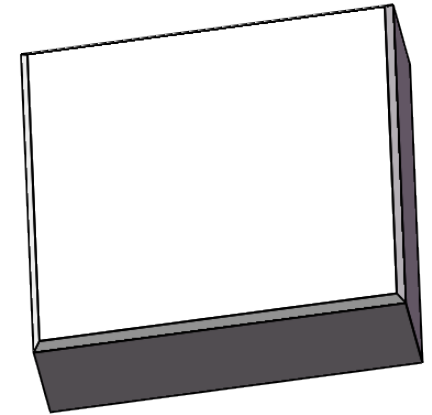
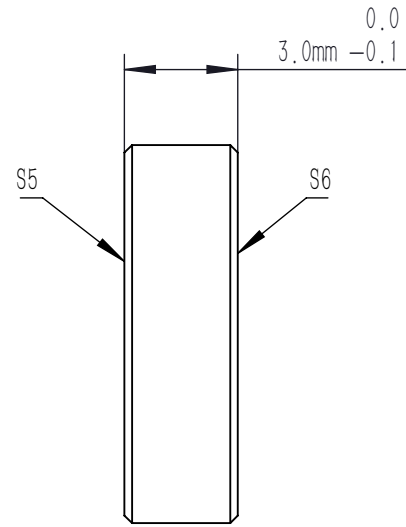
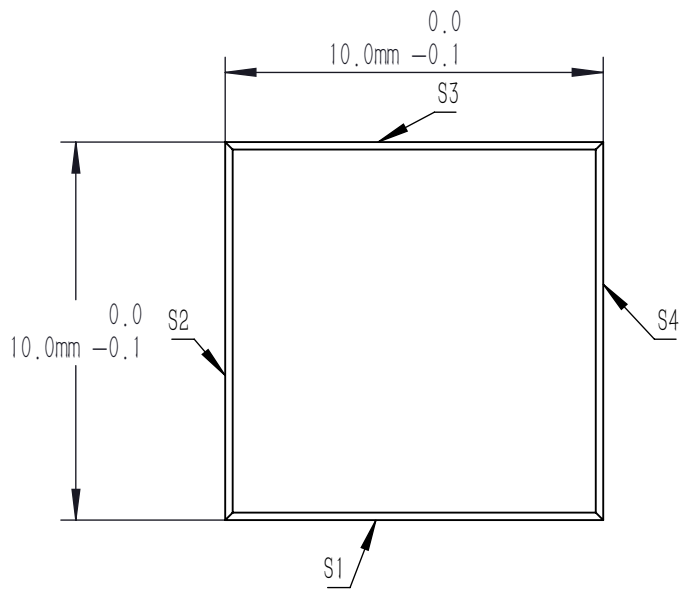


NOTES

1. MATERIAL: borofloat
2. COATING(S3): AG,
 $R_{avg} > 96\%$ @ 450 nm-2.0 μ m
 $R_{avg} > 97.5\%$ @ 2.0-20 μ m, 0° -45° AOI
 (S1, S2): POLISHING
 (S4, S5): FINE GROUND
3. CLEAR APERTURE(S3): >90%CA
4. SURFACE QUALITY(S1, S2, S3): 40/20(S/D)
5. SURFACE FLATNESS(S1, S2, S3): $\lambda/4$ @633 nm
6. CHAMFER: <0.2 mm, 45°
7. DIAMETER TOLERANCE: +0.0/-0.1 mm
8. ANGLE TOLERANCE: ± 10 arcsec



DRAWING PROJECTION			LBTEK			
	NAME	DATE	HRM10-AG			
DRAWN	LZHOU	Aug./12th/24	HOLLOW ROOF MIRROR L x W x H=10.0 mm x 10.0 mm x 8.0 mm, AG, 450 nm-20.0 μ m			
APPROVAL	WCHENG	Aug./12th/24	MATERIAL	WEIGHT	SCALE	REV
FOR INFORMATION ONLY NOT FOR MANUFACTURING PURPOSES			Borofloat	1.3 g	5:1	A



1. MATERIAL: borofloat
2. CLEAR APERTURE: >90% (LxW)
3. SURFACE QUALITY(S5,S6): 10/5
4. SURFACE FLATNESS(S5,S6): $\lambda / 10$
5. PARALLELISM(S5,S6): <10 arcsec
6. UNCOATED(S5,S6): PRECISION POLISHING
(S1,S2,S3,S4): FINE GROUND
7. CHAMFER: <0.2 mm, 45°
8. DIAMETER TOLERANCE: +0.0/-0.1 mm
9. THICKNESS TOLERANCE: ± 0.25 mm

DRAWING PROJECTION			LBTEK			
	NAME	DATE	HRM10-AG			
DRAWN	LZHOU	Aug./12th/24	HOLLOW ROOF MIRROR LxWxH=10.0 mm x 10.0 mm x 8.0 mm, AG: 450 nm-20.0 μm			
APPROVAL	WCHENG	Aug./12th/24	MATERIAL	WEIGHT	SCALE	REV
FOR INFORMATION ONLY NOT FOR MANUFACTURING PURPOSES			Borofloat	1.3 g	5:1	A