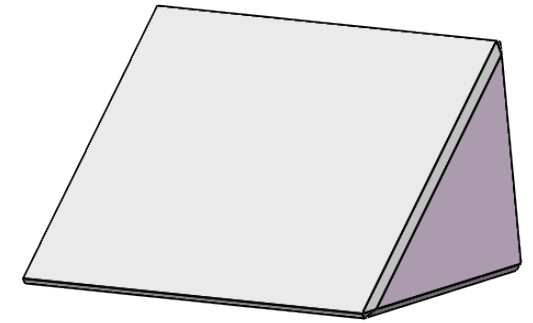
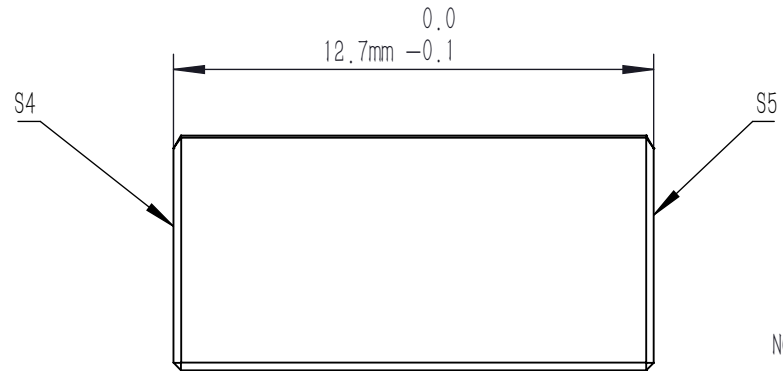
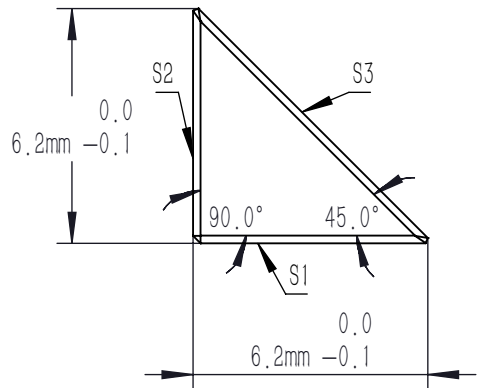
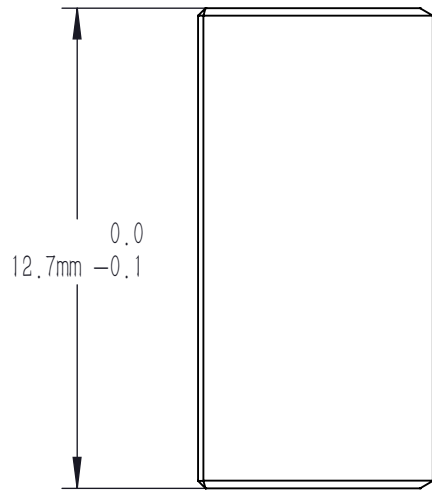


DRAWING PROJECTION			<b>LBTEK</b>			
	NAME	DATE	HRM12-AG			
DRAWN	LZHOU	Aug./12th/24	HOLLOW ROOF MIRROR			
			L x W x H = 12.70 mm x 12.70 mm x 9.35 mm, AG: 450 nm - 20.0 μm			
APPROVAL	WCHENG	Aug./12th/24	MATERIAL	WEIGHT	SCALE	REV
FOR INFORMATION ONLY NOT FOR MANUFACTURING PURPOSES			Borofloat	2.3 g	5:1	A

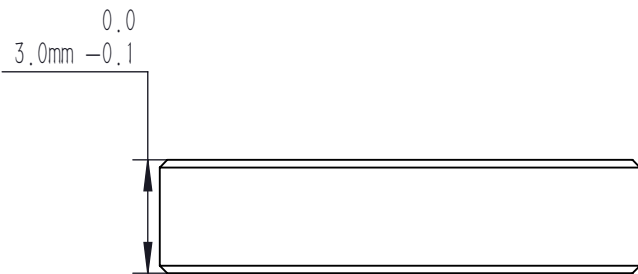
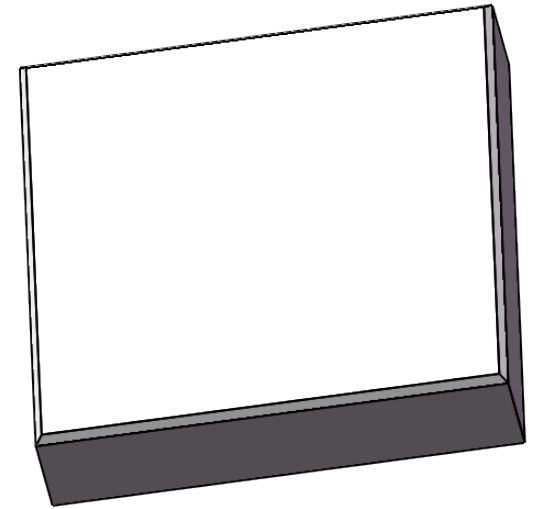
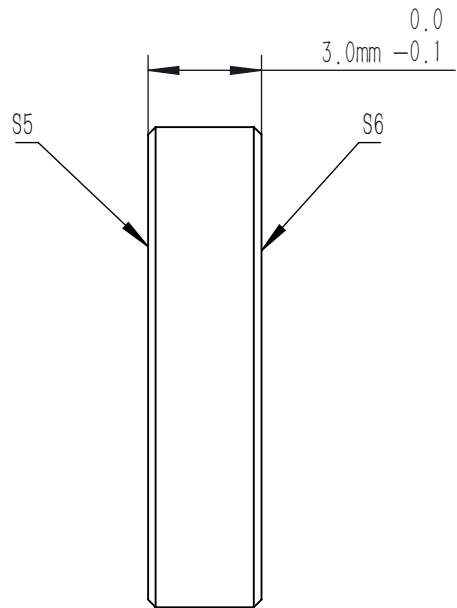
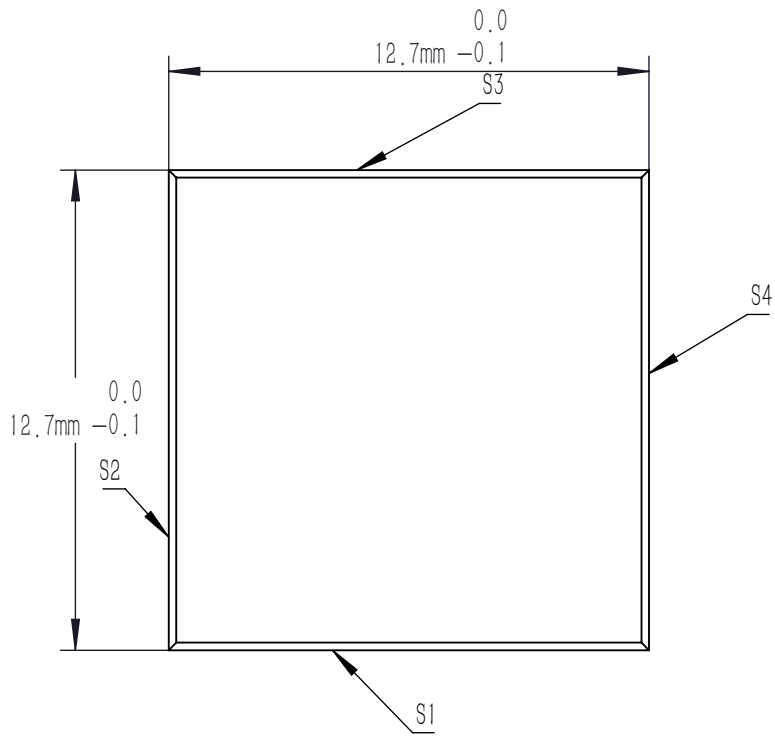


NOTES

1. MATERIAL: borofloat
2. COATING(S3): AG,  
Ravg>96% @ 450 nm-2.0 um  
Ravg>97.5% @ 2.0-20 um, 0° -45° AOI  
(S1, S2): POLISHING  
(S4, S5): FINE GROUND
3. CLEAR APERTURE(S3): >90%CA
4. SURFACE QUALITY(S1, S2, S3): 40/20(S/D)
5. SURFACE FLATNESS(S1, S2, S3):  $\lambda/4@633$  nm
6. CHAMFER: <0.2 mm, 45°
7. DIAMETER TOLERANCE: +0.0/-0.1 mm
8. ANGLE TOLERANCE:  $\pm 10$  arcsec



DRAWING PROJECTION			<b>LBTEK</b>			
	NAME	DATE				
DRAWN	LZHOU	Aug./12th/24	HOLLOW ROOF MIRROR L x W x H=12.70 mm x 12.70 mm x 9.35 mm, AG, 450 nm-20.0 μm			
APPROVAL	WCHENG	Aug./12th/24	MATERIAL	WEIGHT	SCALE	REV
FOR INFORMATION ONLY NOT FOR MANUFACTURING PURPOSES			Borofloat	2.3 g	5:1	A



1. MATERIAL: borofloat
2. CLEAR APERTURE: >90% (LxW)
3. SURFACE QUALITY(S5,S6): 10/5
4. SURFACE FLATNESS(S5,S6):  $\lambda/10$
5. PARALLELISM(S5,S6): <10 arcsec
6. UNCOATED(S5,S6): PRECISION POLISHING  
(S1,S2,S3,S4): FINE GROUND
7. CHAMFER: <0.2 mm, 45°
8. DIAMETER TOLERANCE: +0.0/-0.1 mm
9. THICKNESS TOLERANCE:  $\pm 0.25$  mm

DRAWING PROJECTION			<b>LBTEK</b>			
	NAME	DATE	HRM12-AG			
DRAWN	LZHOU	Aug./12th/24	HOLLOW ROOF MIRROR L x W x H = 12.70 mm x 12.70 mm x 9.35 mm, AG: 450 nm - 20.0 $\mu$ m			
APPROVAL	WCHENG	Aug./12th/24	MATERIAL	WEIGHT	SCALE	REV
FOR INFORMATION ONLY NOT FOR MANUFACTURING PURPOSES			Borofloat	2.3 g	5:1	A