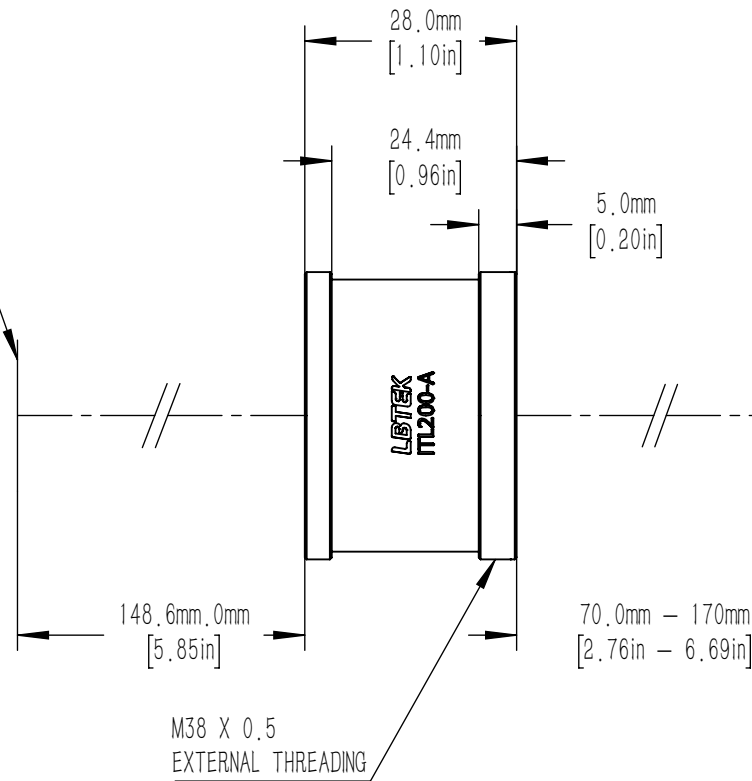
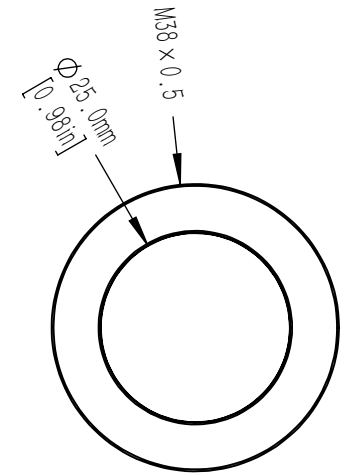


IMAGE PLANE



ENTRANCE PUPIL



NOTES/SPECIFICATIONS:

1. DESIGN WAVELENGTH RANGE: 400–750 nm
2. EFFECTIVE FOCAL LENGTH: 200 mm \pm 1%
3. MAX ENTRANCE PUPIL DIAMETER: ϕ 20 mm
4. ENTRANCE PUPIL DISTANCE: 70 – 170 mm
5. WORKING DISTANCE (REF): 148.6 mm
6. FIELD SIZE: ϕ 22 mm
7. SURFACE QUALITY: 60–40 SCRATCH–DIG
8. AXIAL COLOR: DIFFRACTION LIMITED
9. RESOLUTION: DIFFRACTION LIMITED
10. COATING: BBAR 350 – 700 nm, $R_{avg} < 0.6\%$, 0° AOI

DRAWING PROJECTION			LBTEK			
	NAME	DATE				
DRAWN	JSH	OCT./25th/23	f=200 mm INFINITY–CORRECTED TUBE LENS			
APPROVAL	BZH	OCT./25th/23	MATERIAL	WEIGHT	SCALE	REV
FOR INFORMATION ONLY NOT FOR MANUFACTURING PURPOSES			N/A	0.047 Kg	1:1	B