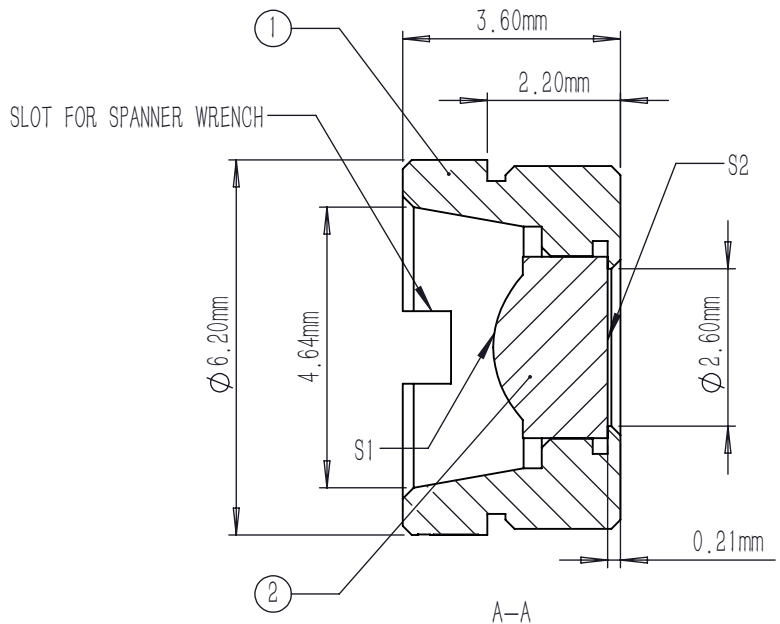
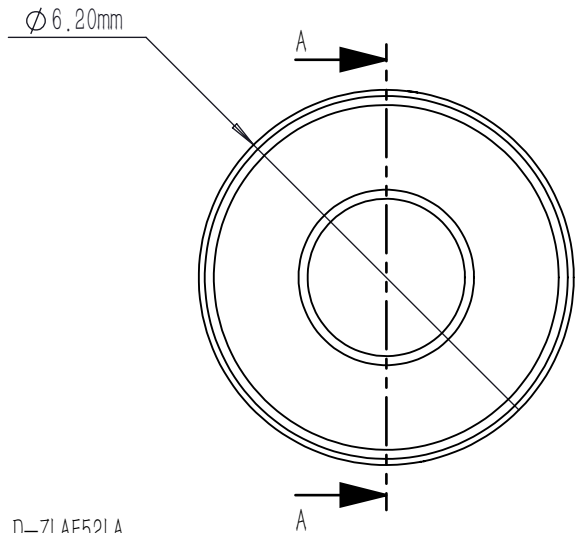


|    |          |           |              |               |              |               |              |
|----|----------|-----------|--------------|---------------|--------------|---------------|--------------|
|    | R        | k         | A4           | A6            | A8           | A10           | A12          |
| S1 | 1.586014 | -2.062694 | 4.938263E-02 | -6.116114E-03 | 1.717442E-03 | -4.643557E-04 | 5.410885E-05 |
| S2 | PLANO    | -         | -            | -             | -            | -             | -            |

$$z = \frac{y^2}{R(1 + \sqrt{1 - (1 + k)Y^2/R^2})} + A_4Y^4 + A_6Y^6 + A_8Y^8 + A_{10}Y^{10} + A_{12}Y^{12}$$



NOTES:

- MATERIAL: D-ZLAF52LA
- DESIGN WAVELENGTH: 780.0 nm
- WORKING WAVELENGTH: 400 nm-700 nm
- CLEAR APERTURE: (S1)  $\phi$ 2.00 mm, (S2)  $\phi$ 1.09 mm
- NUMERICAL APERTURE: 0.5
- FOCAL LENGTH: 2.0 mm
- FOCAL LENGTH TOLERANCE:  $\pm 1.0\%$
- BACK FOCAL LENGTH(REF):  $bf=1.0$  mm
- DIAMETER TOLERANCE:  $\pm 0.015$  mm
- THICKNESS TOLERANCE:  $\pm 0.03$  mm
- CHAMFER: 0.2 mm, 45°
- SURFACE QUALITY: 40-20 SCRATCH-DIG
- CENTRATION:  $<30$  arcmin
- MAXIMUM TEMPERATURE: 250 °C(482 °F)
- AR COATING(S1,S2):  $R_{avg} < 0.5\%$  @400-700 nm

|   | PART DESCRIPTION | MATERIAL            |
|---|------------------|---------------------|
| ① | LENS MOUNT       | 303 STAINLESS STEEL |
| ② | AC110314-A       | D-ZLAF52LA          |

|  |        |              |                         |        |       |     |
|--|--------|--------------|-------------------------|--------|-------|-----|
| DRAWING PROJECTION                                     |        |              | <b>LBTEK</b>            |        |       |     |
|  |        |              |                         |        |       |     |
|  | NAME   | DATE         | MAC110314-A             |        |       |     |
| DRAWN  | SHAN   | APR./30th/24 | ASPHERIC CONDENSER LENS |        |       |     |
| APPROVAL   | WCHENG | APR./30th/24 | MATERIAL                | WEIGHT | SCALE | REV |
| FOR INFORMATION ONLY<br>NOT FOR MANUFACTURING PURPOSES |        |              | D-ZLAF52LA              | 0.51g  | 8:1   | A   |