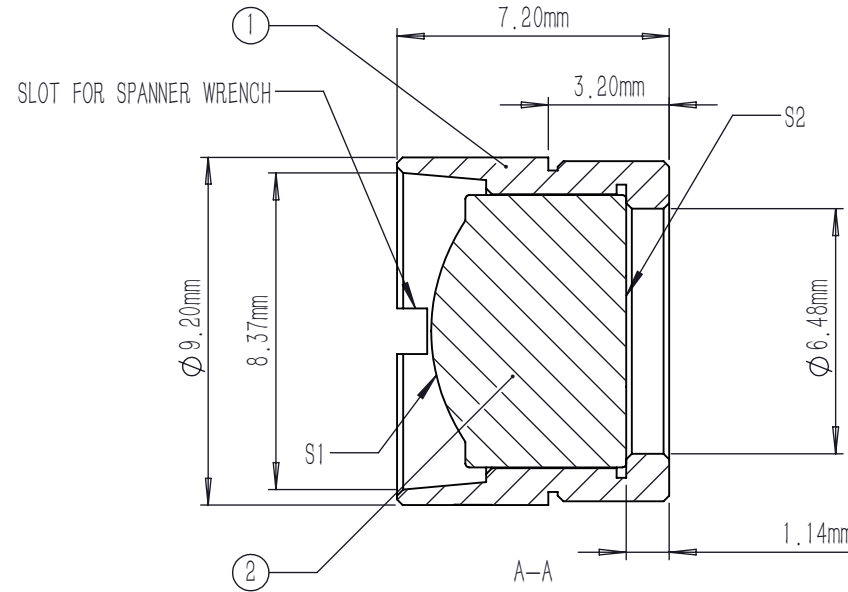
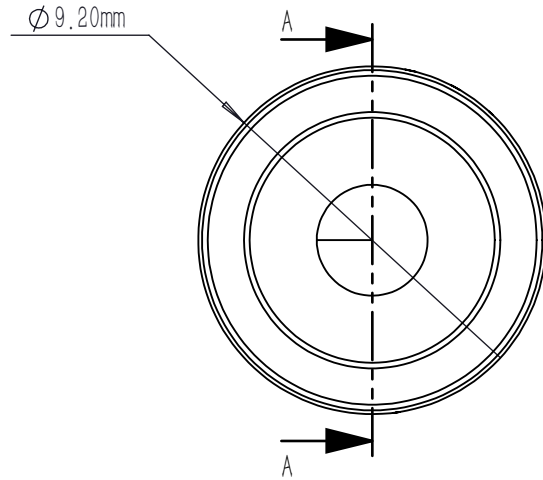


| | TYPE | SHAPE | CA | R | k | A4 | A6 | A8 | A10 | A12 | A14 | A16 |
|----|---------|-------|-------|----------|-----------|-------------|-------------|--------------|-----|-----|-----|-----|
| S1 | ASPHERE | CX | ∅5.00 | 4.948365 | -1.116618 | 6.004451E-4 | 1.364160E-6 | -6.907517E-8 | 0 | 0 | 0 | 0 |
| S2 | PLANO | PL | ∅2.93 | PLANO | 0 | 0 | 0 | 0 | 0 | 0 | 0 | 0 |

$$Z = \frac{Y^2}{R(1 + \sqrt{1 - (1 + K)Y^2 / R^2})} + \sum_i A_{2i} r^{2i}$$



NOTES:

- MATERIAL: D-ZLAF52LA
- DESIGN WAVELENGTH: 780 nm
- WORKING WAVELENGTH: 600 nm-1050 nm
- CLEAR APERTURE: (S1) ∅5.00 mm, (S2) ∅2.93 mm
- NUMERICAL APERTURE: 0.4
- FOCAL LENGTH: 6.2 mm
- FOCAL LENGTH TOLERANCE: ±1.0 %
- BACK FOCAL LENGTH(REF): bf=3.5 mm
- DIAMETER TOLERANCE: ±0.015 mm
- THICKNESS TOLERANCE: ±0.05 mm
- CHAMFER: 0.2 mm, 45 °
- SURFACE QUALITY: 40-20 SCRATCH-DIG
- CENTRATION: <30 arcmin
- MAXIMUM TEMPERATURE: 250 °C(482 °F)
- AR COATING(S1,S2): Ravg<0.5 %@600-1050 nm

| | PART DESCRIPTION | MATERIAL |
|---|------------------|---------------------|
| ① | LENS MOUNT | 303 STAINLESS STEEL |
| ② | AC111619-B | D-ZLAF52LA |

| DRAWING PROJECTION | | | | LBTEK | | | |
|--|--------|--------------|-------------------------|--------------|-------|-----|--|
| | NAME | DATE | MAC111619-B | | | | |
| DRAWN | SHAN | APR./30th/24 | ASPHERIC CONDENSER LENS | | | | |
| APPROVAL | WCHENG | APR./30th/24 | MATERIAL | WEIGHT | SCALE | REV | |
| FOR INFORMATION ONLY NOT FOR MANUFACTURING PURPOSES | | | D-ZLAF52LA | 2.02g | 5:1 | A | |