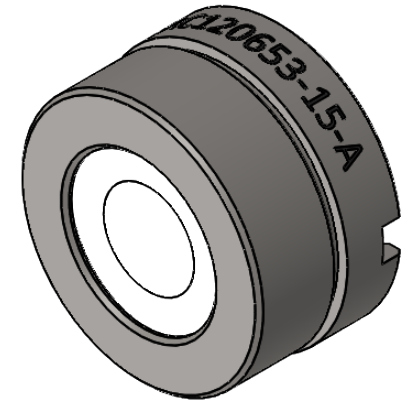
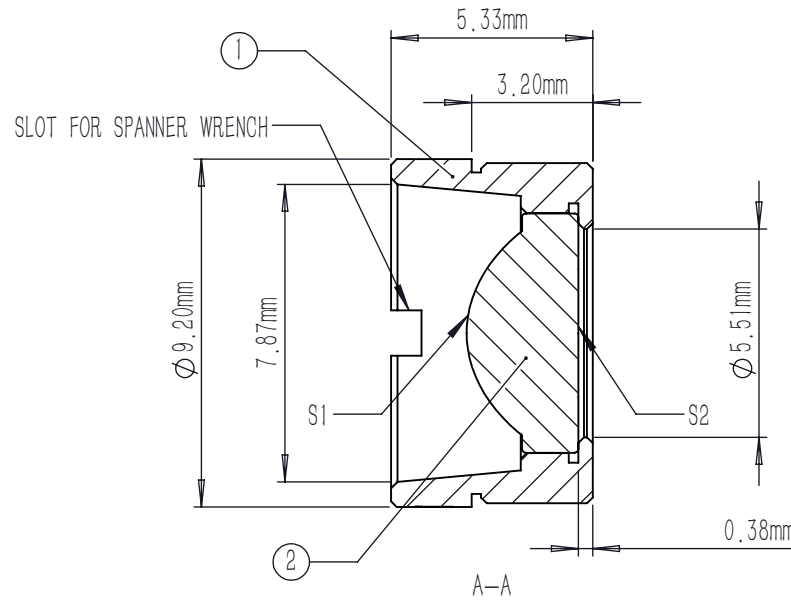
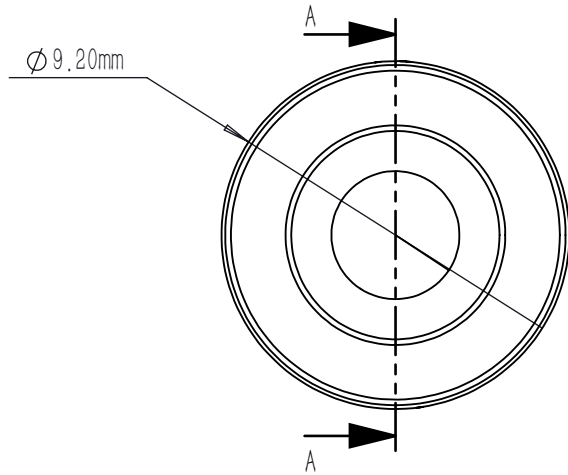


	TYPE	SHAPE	CA	R	k	A4	A6	A8	A10	A12	A14	A16
S1	ASPHERE	CX	∅4.8	2.843569	-0.899542	2.313418E-3	6.313816E-5	7.072595E-7	-4.552089E-8	-8.836614E-9	-3.778708E-10	0
S2	PLANO	PL	∅3.39	PLANO	0	0	0	0	0	0	0	0

$$Z = \frac{Y^2}{R(1 + \sqrt{1 - (1 + K)Y^2 / R^2})} + \sum_i A_{2i} r^{2i}$$



NOTES:

- MATERIAL: D-LAK6
- DESIGN WAVELENGTH: 410 nm
- WORKING WAVELENGTH: 350 nm-700 nm
- CLEAR APERTURE: (S1) ∅4.80 mm, (S2) ∅3.39 mm
- NUMERICAL APERTURE: 0.6
- FOCAL LENGTH: 4.0 mm
- FOCAL LENGTH TOLERANCE: ±1.0 %
- BACK FOCAL LENGTH(REF): bf=2.7 mm
- DIAMETER TOLERANCE: ±0.015 mm
- THICKNESS TOLERANCE: ±0.02 mm
- CHAMFER: 0.2 mm, 45 °
- SURFACE QUALITY: 40-20 SCRATCH-DIG
- CENTRATION: <30 arcmin
- AR COATING(S1, S2): Ravg<0.5 % @350-700 nm

	PART DESCRIPTION	MATERIAL
①	LENS MOUNT	303 STAINLESS STEEL
②	AC120653-15-A	D-LAK6

DRAWING PROJECTION			LBTEK			
	NAME	DATE	MAC120653-15-A			
DRAWN	SHAN	APR./30th/24	ASPHERIC CONDENSER LENS			
APPROVAL	WCHENG	APR./30th/24	MATERIAL	WEIGHT	SCALE	REV
FOR INFORMATION ONLY NOT FOR MANUFACTURING PURPOSES			D-LAK6	1.23g	5:1	A