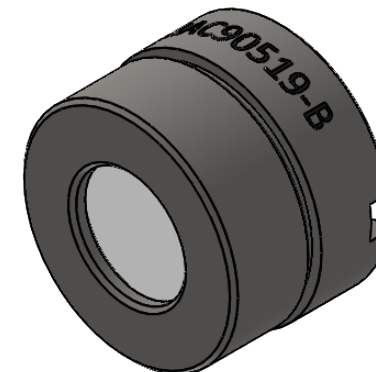
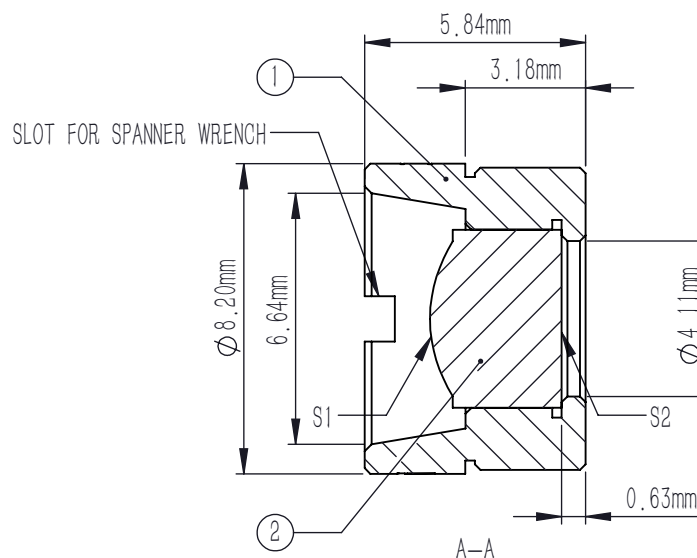
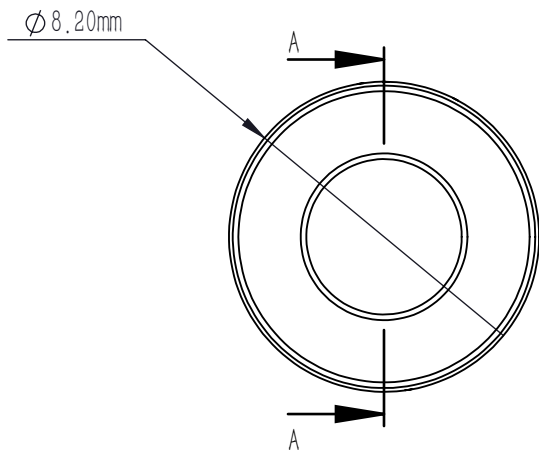


	R	k	A4	A6	A8	A10
S1	3.623129	-1.420775	2.353460E-03	-8.438695E-07	5.362336E-07	-7.978766E-09
S2	PLANO	-	-	-	-	-

$$z = \frac{Y^2}{R(1 + \sqrt{1 - (1+k)Y^2/R^2})} + A_4Y^4 + A_6Y^6 + A_8Y^8 + A_{10}Y^{10}$$



NOTES:

- MATERIAL: D-ZK3
- DESIGN WAVELENGTH: 633.0 nm
- WORKING WAVELENGTH: 700 nm-1100 nm
- CLEAR APERTURE: (S1)  $\phi$ 3.70 mm, (S2)  $\phi$ 2.05 mm
- NUMERICAL APERTURE: 0.3
- FOCAL LENGTH: 6.2 mm
- FOCAL LENGTH TOLERANCE:  $\pm 1.0\%$
- BACK FOCAL LENGTH(REF): bf=4.1 mm
- DIAMETER TOLERANCE:  $\pm 0.015$  mm
- THICKNESS TOLERANCE:  $\pm 0.04$  mm
- CHAMFER: 0.2 mm, 45°
- SURFACE QUALITY: 40-20 SCRATCH-DIG
- CENTRATION:  $< 30$  arcmin
- MAXIMUM TEMPERATURE: 250 °C(482 °F)
- AR COATING(S1,S2): Ravg $< 0.5\%$ @700-1100 nm

	PART DESCRIPTION	MATERIAL
①	LENS MOUNT	303 STAINLESS STEEL
②	AC90519-B	D-ZK3

DRAWING PROJECTION				<h1 style="color: red; margin: 0;">LBTEK</h1>			
	NAME	DATE	MAC90519-B				
DRAWN	SHAN	APR./30th/24	ASPHERIC CONDENSER LENS				
APPROVAL	WCHENG	APR./30th/24	MATERIAL	WEIGHT	SCALE	REV	
FOR INFORMATION ONLY NOT FOR MANUFACTURING PURPOSES			D-ZK3	1.85g	5:1	A	