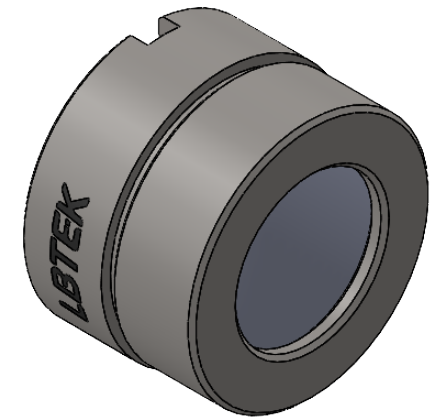
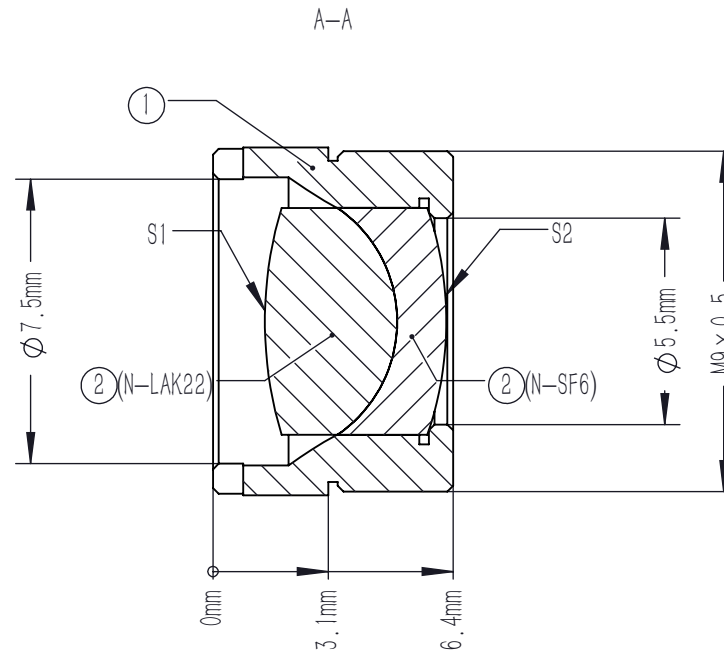
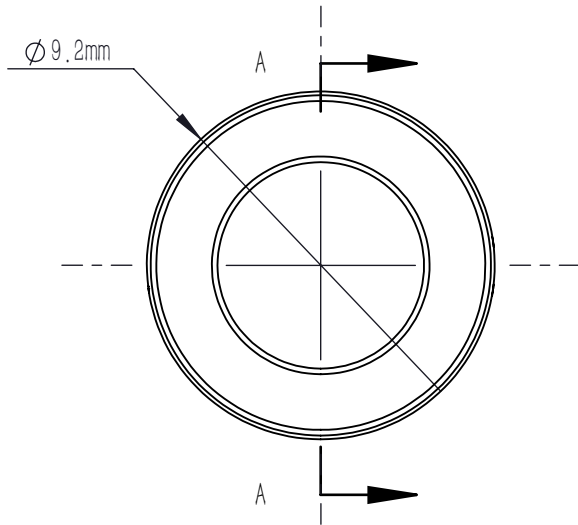


	PART DESCRIPTION	MATERIAL
①	LENS MOUNT	303 STAINLESS STEEL
②	AD101-C	N-LAK22
		N-SF6



NOTES

- MATERIAL: N-LAK22/N-SF6
- DESIGN WAVELENGTH: 1016 nm, 1330 nm, 1550 nm
- CLEAR APERTURE: >90%CA
- OPERATION WAVELENGTH: 1100 nm-1650 nm
- DIAMETER TOLERANCE: +0.0/-0.1 mm
- THICKNESS TOLERANCE: ±0.2 mm
- FOCAL LENGTH: 10.0 mm ±1%@1330 nm
- BACK FOCAL LENGTH(REF): 8.5 mm
- SURFACE QUALITY (S/D) (S1,S2) : 40/20
- SURFACE POWER (S1,S2) : $3\lambda/2@632.8$ nm
- SURFACE IRREGULARITY(S1,S2) : $\lambda/4@632.8$ nm
- CENTRATION: <3 arcmin
- CHAMFER: <0.2 mm, 45°
- AR COATING (S1,S2) : $R_{avg}<0.5\%@1100$ nm-1650 nm (6° AOI, single)

DRAWING PROJECTION				LBTEK			
				MAD101-C			
	NAME	DATE	ACHROMATIC DOUBLETS				
DRAWN	SHAN	MAY./7th/25	MATERIAL	WEIGHT	SCALE	REV	
APPROVAL	WCHENG	MAY./7th/25	N/A	1.6 g	5:1	A	
FOR INFORMATION ONLY NOT FOR MANUFACTURING PURPOSES							