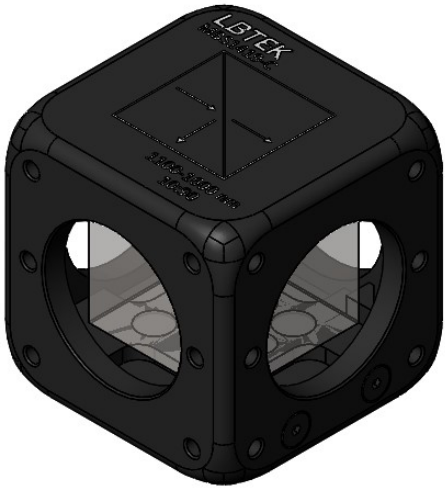


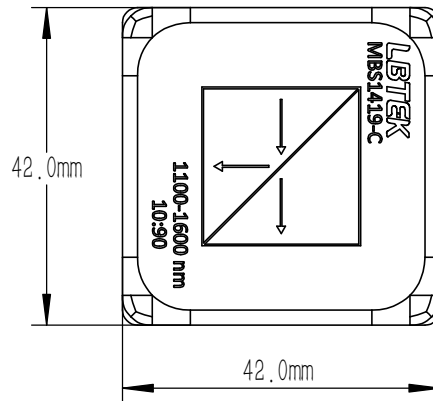
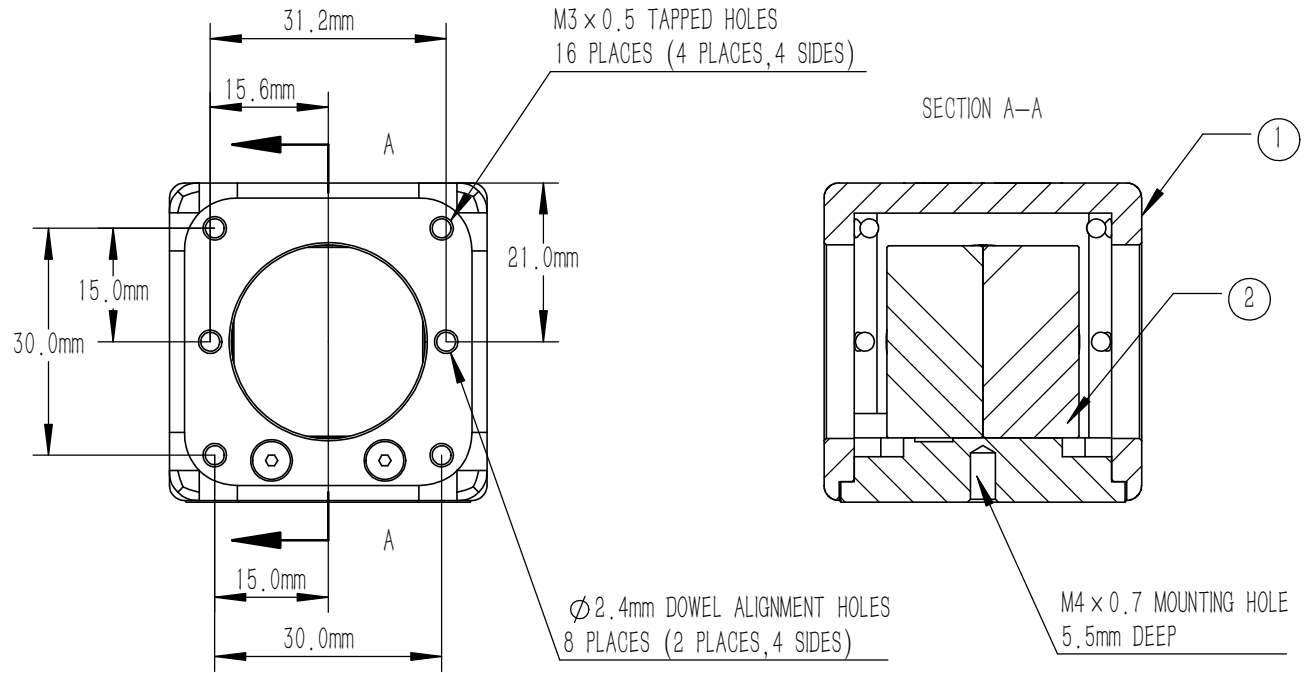
NUMBER	PART DESCRIPTION	MATERIAL
①	MECHANICAL HOUSING	BLACK ANODIZED ALUMINUM
②	BS1419-C	N-BK7



NOTES

BS1419-C:

- WORKING WAVELENGTH: 1100 nm-1600 nm
- CLEAR APERTURE: >80%CA
- AR COATING(S1,S2,S3,S4):  $R_{avg} < 0.5\%$  @ 1100 nm-1600 nm (6° AOI, SINGLE SURFACE)
- ANGLE TOLERANCE:  $\pm 5'$
- COATING(S5): SPLITTING COATING  
 $T_{abs} = (90 \pm 10)\%$ ,  $R_{abs} = (10 \pm 5)\%$ ;  
 $|T_s - T_p| < 10\%$ ,  $|R_s - R_p| < 5\%$ ;  
 $T_{abs} + R_{abs} > 90\%$  @ 1100 nm-1390 nm & 1430 nm-1600 nm  
 $T_{abs} = (90 \pm 10)\%$ ,  $R_{abs} = (10 \pm 7)\%$ ;  
 $|T_s - T_p| < 10\%$ ,  $|R_s - R_p| < 5\%$ ;  $T_{abs} + R_{abs} > 90\%$  @ 1390 nm-1430 nm
- GLUED(S5,S6): NOA61
- SPLIT RATIO(R:T): 10:90
- TRANSMITTED BEAM DEVIATION:  $0^\circ \pm 5$  arcmin
- REFLECTED BEAM DEVIATION:  $90^\circ \pm 5$  arcmin
- SURFACE QUALITY(S1,S2,S3,S4): 40/20(S/D)
- WAVEFRONT ERROR(RMS):  $\lambda/4$  @ 633 nm
- SURFACE FLATNESS(S1,S2,S3,S4):  $\lambda/4$  @ 633 nm
- OTHER SURFACES: FINE GROUND
- CHAMFER: 0.2 mm, 45°



DRAWING PROJECTION							
	NAME	DATE	MBS1419-C				
DRAWN	LTAN	Oct./10th/24	BEAM SPLITTER L=25.4 mm, R:T=10:90 @ 1100 nm-1600 nm				
APPROVAL	WCHENG	Oct./10th/24	MATERIAL	WEIGHT	SCALE	REV	
FOR INFORMATION ONLY NOT FOR MANUFACTURING PURPOSES			N-BK7	129 g	1:1	B	