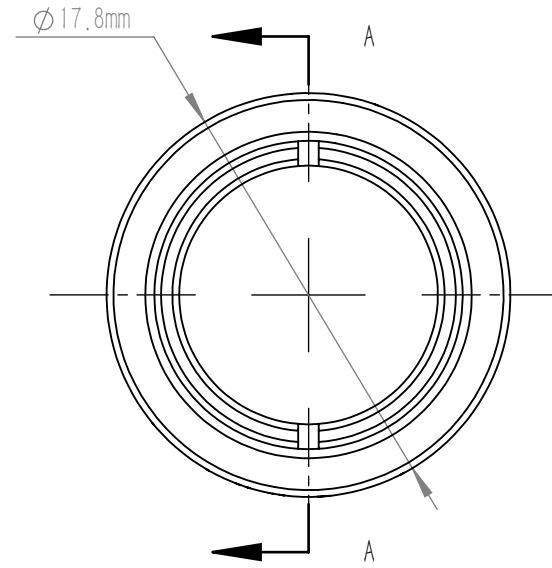
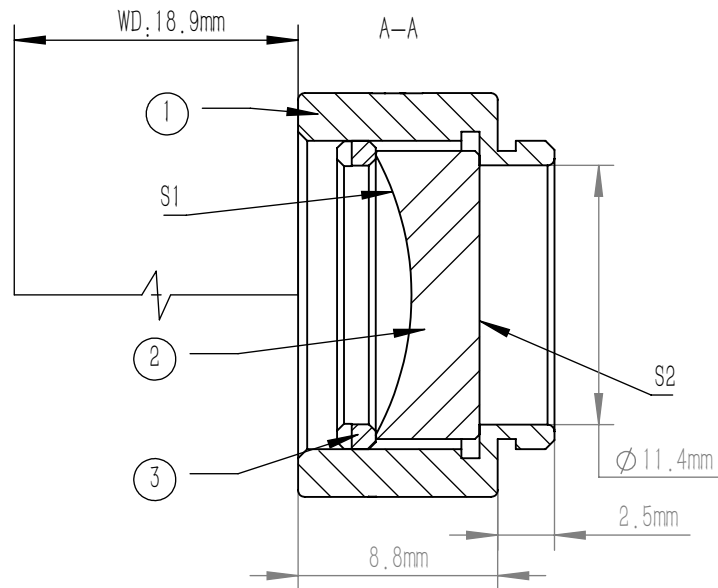


| | PART DESCRIPTION | MATERIAL |
|---|------------------|--------------------|
| ① | SM05-8A | ANODIZED ALUMINIUM |
| ② | CC10305 | N-BK7 |
| ③ | SM05R | ANODIZED ALUMINIUM |



NOTES

1. DESIGN WAVELENGTH: 587.6 nm
2. OPERATION WAVELENGTH: 350 nm-2.0 μm
3. DIAMETER TOLERANCE: +0.0/-0.1 mm
4. THICKNESS TOLERANCE: ±0.1 mm
5. FOCAL LENGTH: -25.0 mm±1%
6. BACK FOCAL LENGTH(REF): -26.9 mm
7. CLEAR APERTURE: >90%CA
8. SURFACE QUALITY(S/D)(S1,S2): 40/20
9. SURFACE FLATNESS(S1): λ/2 @ 632.8 nm
10. SURFACE POWER(S2): 3λ/2 @ 632.8 nm
11. SURFACE IRREGULARITY(S2): λ/4 @ 632.8 nm
12. CENTRATION: <3 arcmin
13. CHAMFER: <0.2 mm, 45°
14. COATING(S1,S2): UNCOATED

| | | | | | | |
|--|--------|--------------|---|--------|-------|-----|
| DRAWING PROJECTION | | | LBTEK | | | |
| | | | | | | |
| | NAME | DATE | MCC10305 | | | |
| DRAWN | BSHU | Aug./19th/24 | Ø 12.7 mm, f=-25.0 mm PLANO CONCAVE LENS UNCOATED | | | |
| APPROVAL | WCHENG | Aug./19th/24 | MATERIAL | WEIGHT | SCALE | REV |
| FOR INFORMATION ONLY NOT FOR MANUFACTURING PURPOSES | | | N-BK7 | 9.60 g | 2:1 | B |