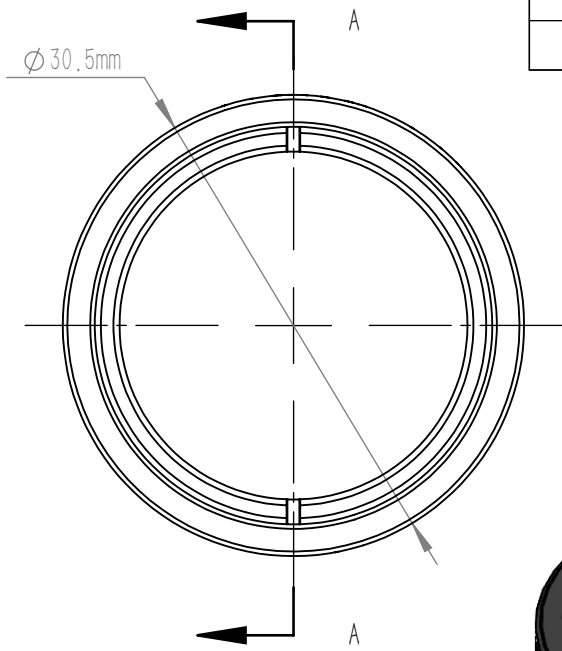
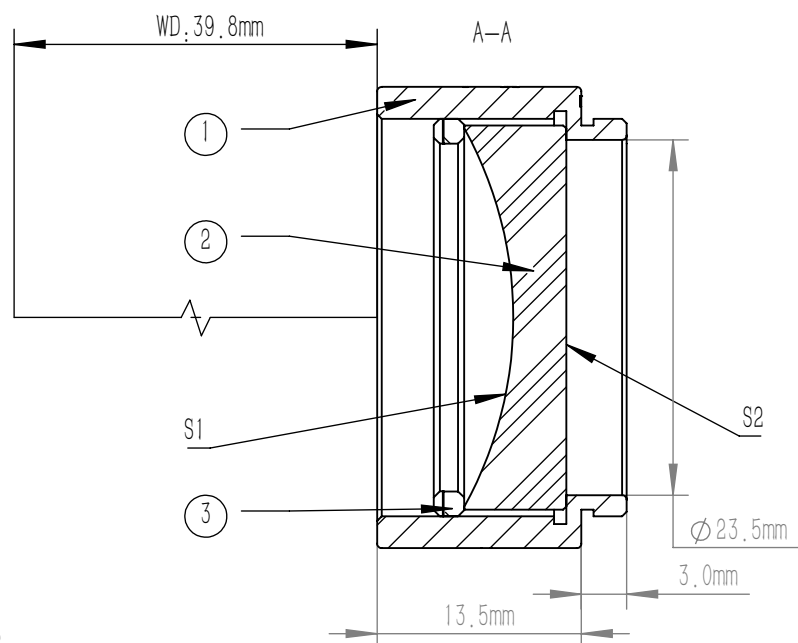


	PART DESCRIPTION	MATERIAL
①	SM1-12.5A	ANODIZED ALUMINIUM
②	CC10610-C	N-BK7
③	SM1R	ANODIZED ALUMINIUM



NOTES

- DESIGN WAVELENGTH: 587.6 nm
- OPERATION WAVELENGTH: 1100 nm-1650 nm
- DIAMETER TOLERANCE: +0.0/-0.1 mm
- THICKNESS TOLERANCE: ±0.1 mm
- FOCAL LENGTH: -50.0 mm±1%
- BACK FOCAL LENGTH(REF): -52.3 mm
- CLEAR APERTURE: >90%CA
- SURFACE QUALITY(S/D)(S1,S2): 40/20
- SURFACE FLATNESS(S1): $\lambda/2$ @ 632.8 nm
- SURFACE POWER(S2): $3\lambda/2$ @ 632.8 nm
- SURFACE IRREGULARITY(S2): $\lambda/4$ @ 632.8 nm
- CENTRATION: <3 arcmin
- CHAMFER: <0.2 mm, 45°
- COATING(S1,S2): AR COATING R_{avg} <0.5% @ 1100 nm-1650 nm

DRAWING PROJECTION			LBTEK			
		NAME	DATE	MCC10610-C		
DRAWN	BSHU	Aug./19th/24		ϕ 25.4 mm, f=-50.0 mm PLANO CONCAVE LENS AR COATING 1100-1650 nm		
APPROVAL	WCHENG	Aug./19th/24	MATERIAL	WEIGHT	SCALE	REV
FOR INFORMATION ONLY NOT FOR MANUFACTURING PURPOSES			N-BK7	30.70g	2:1	B