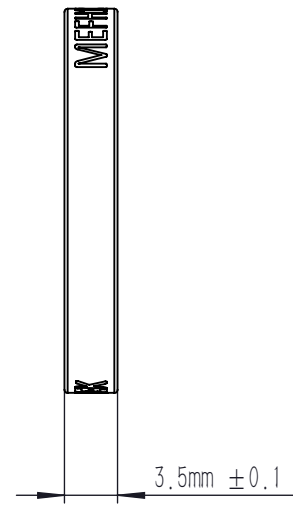
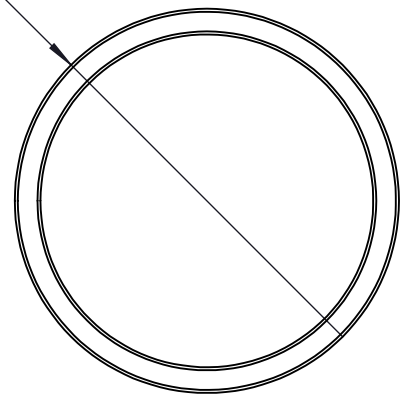


$\overset{0}{\phi} 25.4\text{mm} -0.1$



NOTE

1. CUT-ON(CUT-OFF) WAVELENGTH: 750 nm
2. CLEAR APERTURE: 22 mm
3. TRANSMITTED WAVEFRONT ERROR: $\lambda/2@633$ nm
4. SURFACE QUALITY: 60/40 SCRATCH-DIG
5. COATING: Tabs>85%@400 nm-420 nm, 0° AOI
 Tabs>90%@420 nm-740 nm, 0° AOI
 OD(avg)>5@761 nm-1180 nm, 0° AOI

DRAWING PROJECTION			LBTEK			
	NAME	DATE				
DRAWN	LZHOU	JUL./29th/24	SHORTPASS FILTER $\phi 25.4$ mm x 3.5 mm, 750 nm			
APPROVAL	WCHENG	JUL./29th/24	MATERIAL	WEIGHT	SCALE	REV
FOR INFORMATION ONLY NOT FOR MANUFACTURING PURPOSES			UV FUSED SILICA&ALUMINUM	3g	2:1	C