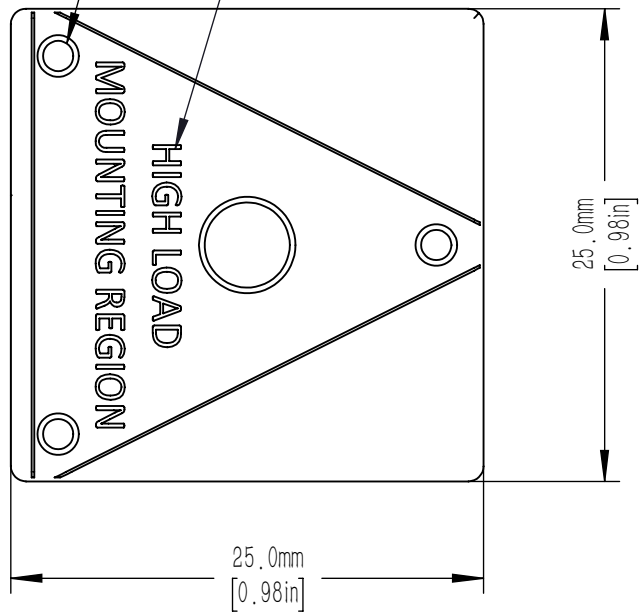
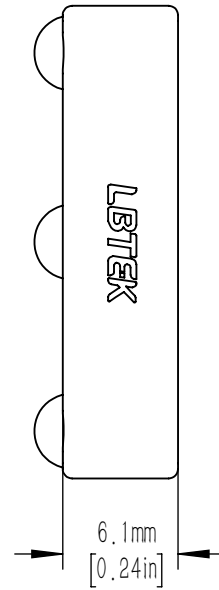


M2 THREADED HOLE
3 PLACES

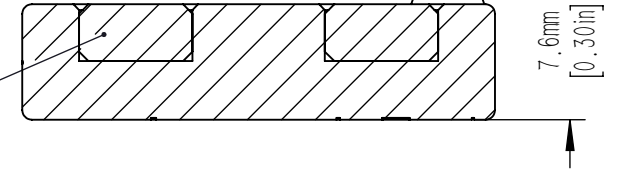
CENTER OF GRAVITY MOUNTED TO
MKB2-25 SHOULD BE LOCATED WITHIN
MOUNTING REGION FOR MAXIMUM
STABILITY



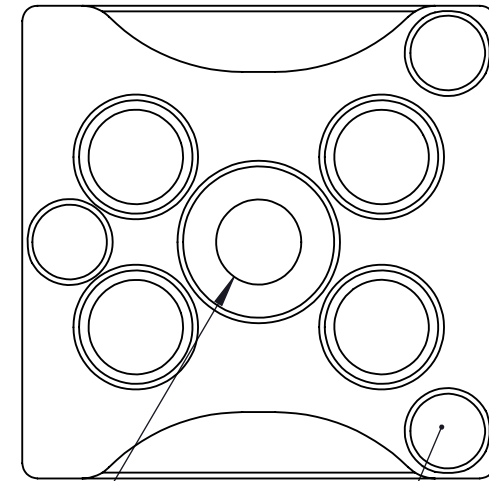
HIGH STRENGTH MAGNET
4 PLACES



A-A



A



A

COUNTERBORE FOR USE
WITH M4 CAP SCREW
(INCLUDED)

STEEL BALL TO MATE
3 PLACES

DRAWING PROJECTION			LBTEK			
	NAME	DATE	MKB2-25-A			
DRAWN	SSO	SEP. /17th/22	MKB2-25 TOP PLATE			
APPROVAL	ZXU	SEP. /17th/22	MATERIAL	WEIGHT	SCALE	REV
FOR INFORMATION ONLY NOT FOR MANUFACTURING PURPOSES			N/A	0.02 Kg	5:2	B