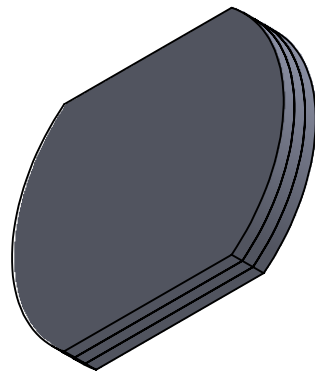


NOTE:

1. COMPONENT MATERIAL: LCP/N-BK7
2. COMPONENT SIZE:  $\varnothing 25.4 +0/-0.1$  mm
3. COMPONENT THICKNESS:  $3.0 \pm 0.05$  mm
4. EDGE WIDTH:  $2.7 \pm 0.05$  mm
5. WORKING WAVELENGTH: 532 nm
6. TRANSMITTANCE: >96 %
7. RETARDANCE UNIFORMITY:  $\pm 5$  nm
8. RETARDANCE PRECISION:  $\pm 5$  nm
9. SURFACE FINISHMENT (S/D) : 60/40
10. AR COATING (S1, S2) :  $R_{avg} < 0.5\% @ 400-700$  nm
11. BEAM SPLITTING MODE:  $1 \times 4$
12. BEAN SPLITTING ANGLE:  $2^\circ$
13. BEAM SPLITTING UNIFORMITY: >90 %



DRAWING PROJECTION			<b>LBTEK</b>			
	NAME	DATE	MLGS25-1402-532			
DRAWN	SHAN	NOV./1th/23	Multilayer Grating Beam Splitter			
APPROVAL	XLIU	NOV./1th/23	MATERIAL	WEIGHT	SCALE	REV
FOR INFORMATION ONLY NOT FOR MANUFACTURING PURPOSES			LCP/N-BK7	0.01 Kg	2:1	B