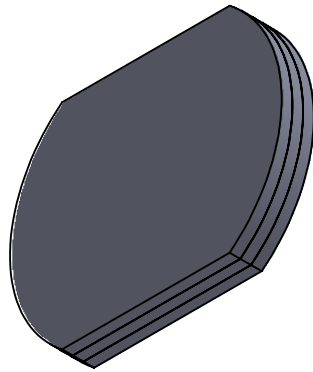


NOTE:

1. COMPONENT MATERIAL: LCP/N-BK7
2. COMPONENT SIZE: $\varnothing 25.4 +0/-0.1$ mm
3. COMPONENT THICKNESS: 3.0 ± 0.05 mm
4. EDGE WIDTH: 2.7 ± 0.05 mm
5. WORKING WAVELENGTH: 1064 nm
6. TRANSMITTANCE: $>97\%$
7. RETARDANCE UNIFORMITY: ± 5 nm
8. RETARDANCE PRECISION: ± 5 nm
9. SURFACE FINISHMENT (S/D) : 60/40
10. AR COATING (S1, S2) : $R_{avg} < 0.5\% @ 700-1100$ nm
11. BEAM SPLITTING MODE: 1×4
12. BEAM SPLITTING ANGLE: 4°
13. BEAM SPLITTING UNIFORMITY: $>93\%$



DRAWING PROJECTION			LBTEK			
	NAME	DATE				
DRAWN	SHAN	NOV./1th/23	Multilayer Grating Beam Splitter			
APPROVAL	XLIU	NOV./1th/23	MATERIAL	WEIGHT	SCALE	REV
FOR INFORMATION ONLY NOT FOR MANUFACTURING PURPOSES			LCP/N-BK7	0.01 Kg	2:1	B