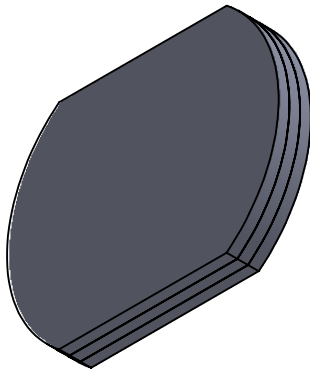


NOTE:

1. COMPONENT MATERIAL: LCP/N-BK7
2. COMPONENT SIZE: $\varnothing 25.4 +0/-0.1$ mm
3. COMPONENT THICKNESS: 3.0 ± 0.05 mm
4. EDGE WIDTH: 2.7 ± 0.05 mm
5. WORKING WAVELENGTH: 532 nm
6. TRANSMITTANCE: >96 %
7. RETARDANCE UNIFORMITY: ± 5 nm
8. RETARDANCE PRECISION: ± 5 nm
9. SURFACE FINISHMENT (S/D) : 60/40
10. AR COATING (S1, S2) : $R_{avg} < 0.5\% @ 400-700$ nm
11. BEAM SPLITTING MODE: 2×2
12. BEAM SPLITTING ANGLE: 2°
13. BEAM SPLITTING UNIFORMITY: >90 %



| | | | | | | |
|--|------|-------------|----------------------------------|---------|-------|-----|
| DRAWING PROJECTION | | | LBTEK | | | |
| | NAME | DATE | | | | |
| DRAWN | SHAN | NOV./1th/23 | Multilayer Grating Beam Splitter | | | |
| APPROVAL | XLIU | NOV./1th/23 | MATERIAL | WEIGHT | SCALE | REV |
| FOR INFORMATION ONLY NOT FOR MANUFACTURING PURPOSES | | | LCP/N-BK7 | 0.01 Kg | 2:1 | B |