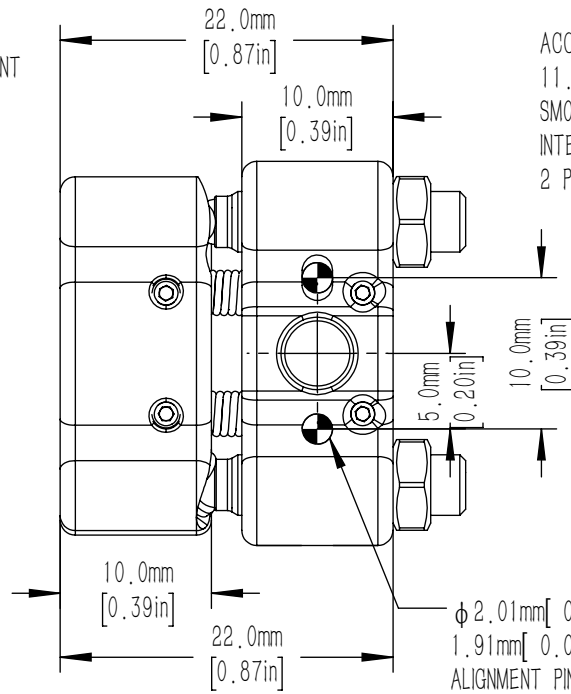
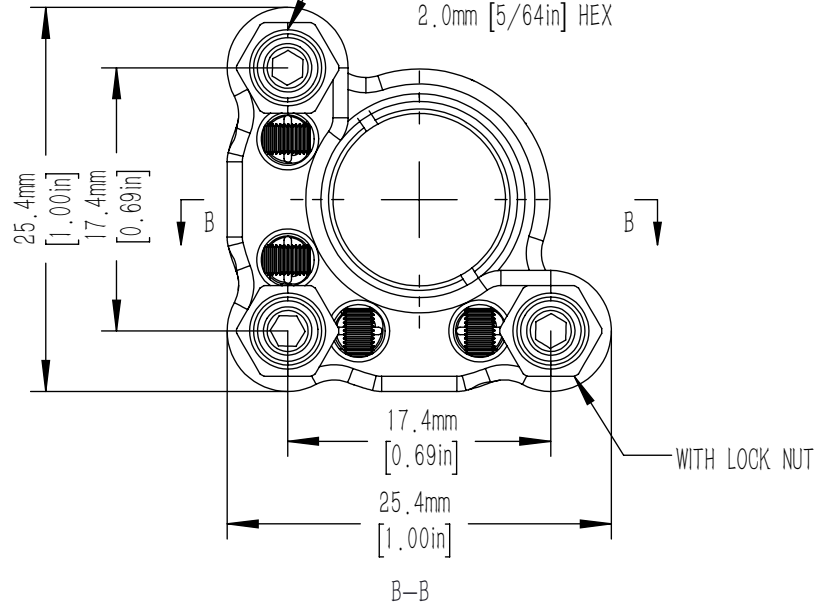
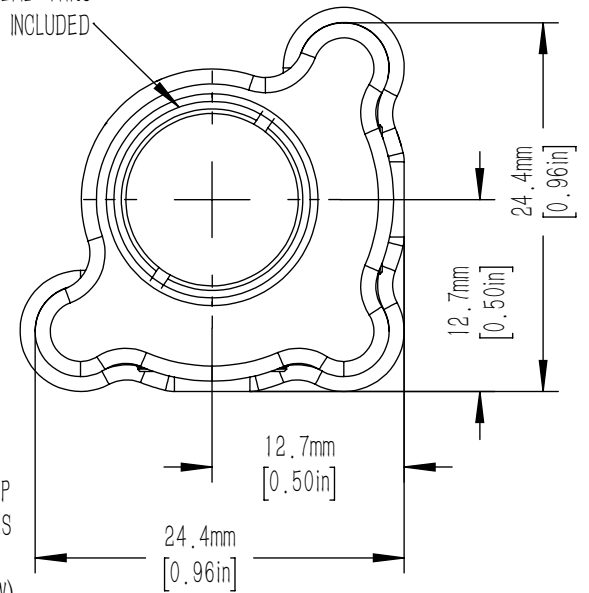


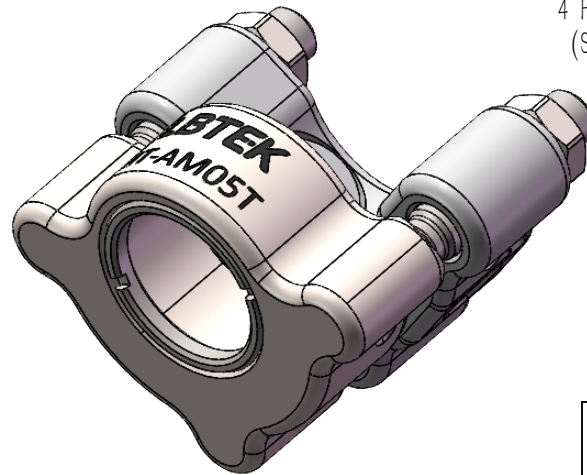
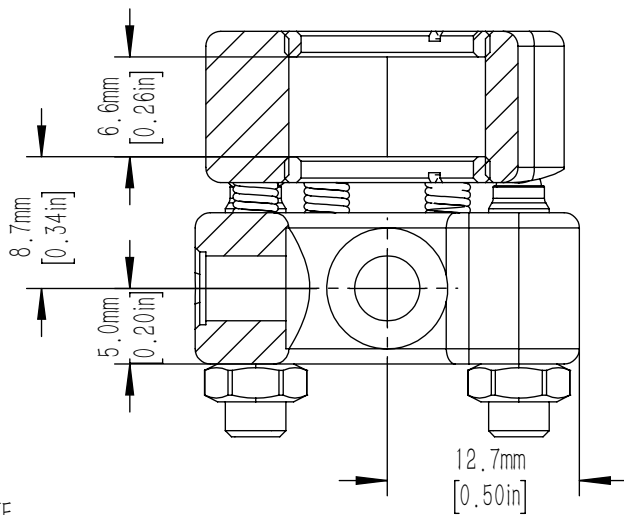
M4X0.2 ADJUSTER SCREWS
 PROVIDES +/-5° TOTAL ANGULAR DISPLACEMENT
 (0.65° PER REVOLUTION)
 3 PLACES
 2.0mm [5/64in] HEX



ACCEPTS 12.7mm [0.50in] OPTICS
 11.4mm [0.45in] CLEAR APERTURE
 SM05 (0.535-40) SERIES
 INTERNAL THREAD THRU
 2 PCS SM05R INCLUDED



φ2.01mm [0.079in]
 1.91mm [0.075in] DEEP
 ALIGNMENT PIN FEATURES
 4 PLACES(2@90°)
 (SEE NOTE(1&2)BELOW)



NOTE:

- 1) RECOMMENDED DOWEL PIN FOR ALIGNMENT PIN FEATURES IS A STANDARD 2mm DIN 7-m6 (ISO 2338) GROUND DOWEL PIN (2.002 mm TO 2.008 mm).
- 2) FOR A 2mm X 5mm PIN, WE RECOMMEND 0.0791in TO 0.0796in (2.01mm TO 2.02mm) X 0.185in±0.005in (4.7mm±0.13mm) DEEP HOLES BE MADE INTO THE MATING SURFACE FOR THE MOUNT. THE SEPARATION OF THE HOLES IN RELATION TO THE MOUNTING HOLE LOCATION SHOULD HAVE A TOLERANCE OF 0.003in(0.08mm)

| | | | | | | |
|--|------|--------------|--|----------|-------|-----|
| DRAWING PROJECTION | | | LBTEK | | | |
| NAME | DATE | MT-AM05T | | | | |
| DRAWN | HDE | Jul./13th/22 | MIRROR MOUNT FOR φ12.7mm OPTICS, MT HIGH STABILITY SERIE | | | |
| APPROVAL | ZXU | Jul./13th/22 | MATERIAL | WEIGHT | SCALE | REV |
| FOR INFORMATION ONLY NOT FOR MANUFACTURING PURPOSES | | | N/A | 0.035 Kg | 2:1 | C |