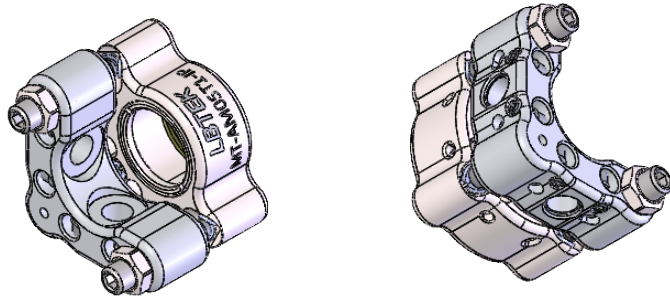
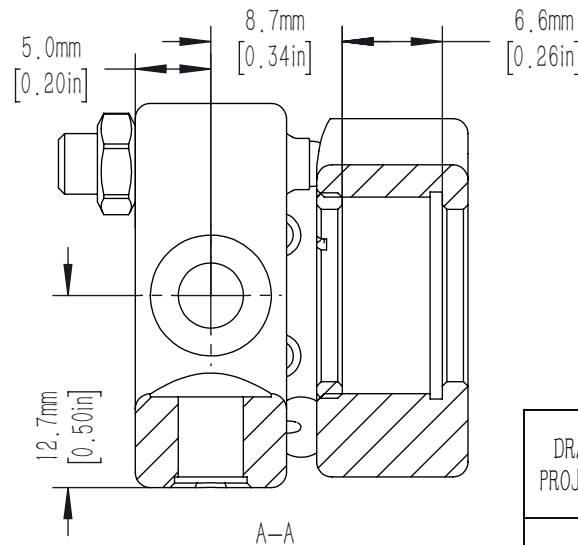
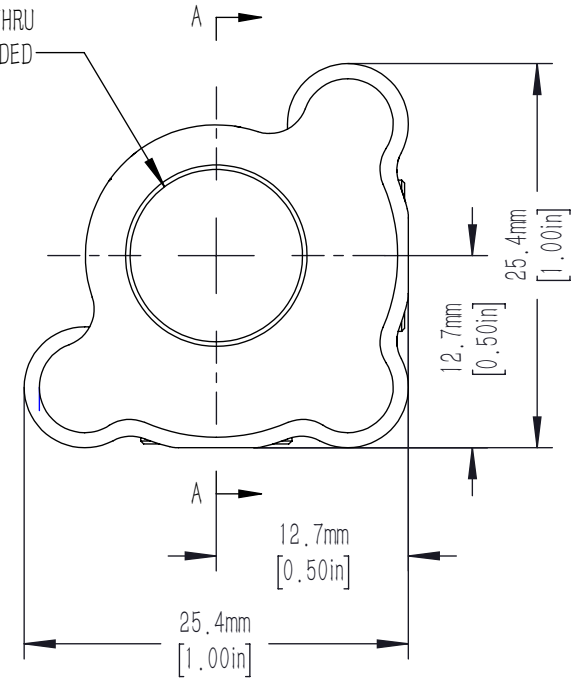
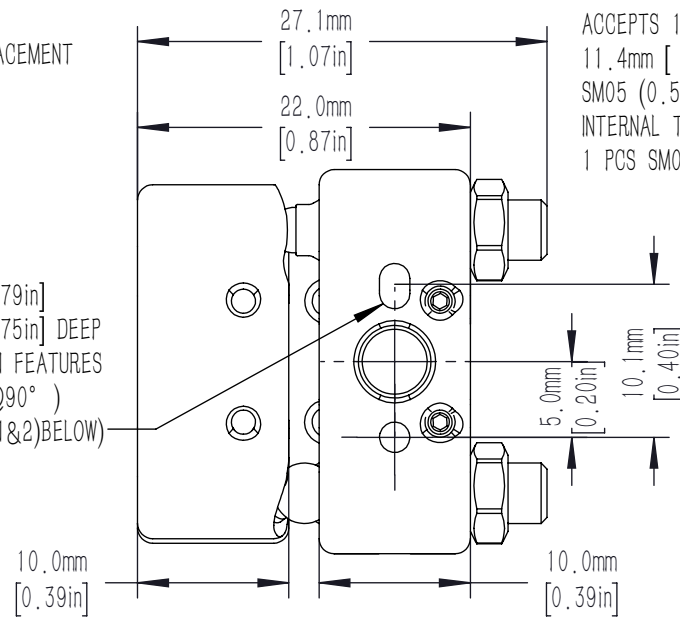


2.01mm [0.079in]
 1.9mm [0.075in] DEEP
 ALIGNMENT PIN FEATURES
 4 PLACES(2@90°)
 (SEE NOTE(1&2)BELOW)



NOTE:

- 1) RECOMMENDED DOWEL PIN FOR ALIGNMENT PIN FEATURES IS A STANDARD 2mm DIN 7-m6 (ISO 2338) GROUND DOWEL PIN (2.002 mm TO 2.008 mm).
- 2) FOR A 2mm X 5mm PIN, WE RECOMMEND 0.0791in TO 0.0796in (2.01mm TO 2.02mm) X 0.185in±0.005in (4.7mm±0.13mm) DEEP HOLES BE MADE INTO THE MATING SURFACE FOR THE MOUNT. THE SEPARATION OF THE HOLES IN RELATION TO THE MOUNTING HOLE LOCATION SHOULD HAVE A TOLERANCE OF 0.003in(0.08mm).

DRAWING PROJECTION			LBTEK			
	NAME	DATE				
DRAWN	PCHEN	Nov./4th/25	MIRROR MOUNT FOR ϕ 12.7mm OPTICS, MT HIGH STABILITY SERIES			
APPROVAL	YHLI	Nov./4th/25	MATERIAL	WEIGHT	SCALE	REV
FOR INFORMATION ONLY NOT FOR MANUFACTURING PURPOSES			N/A	0.034 Kg	2:1	A