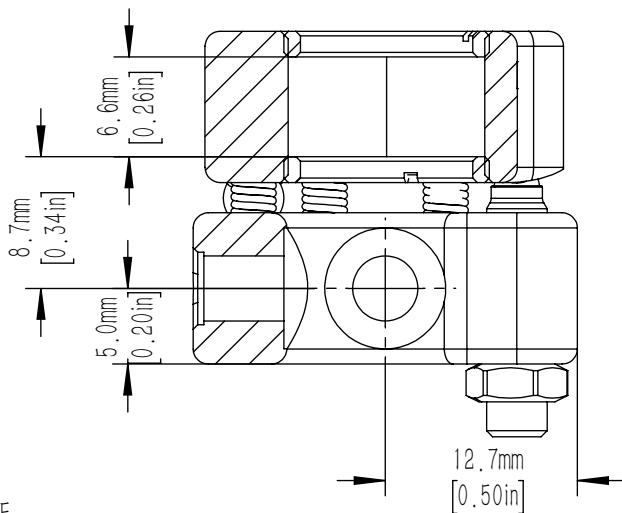
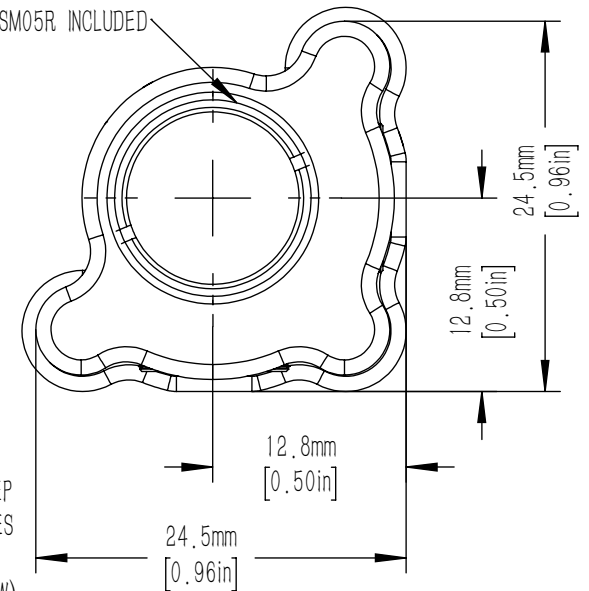


ACCEPTS 12.7mm [0.50in] OPTICS  
11.4mm [0.45in] CLEAR APERTURE  
SM05 (0.535-40) SERIES  
INTERNAL THREAD THRU  
2 PCS SM05R INCLUDED



NOTE:

- 1) RECOMMENDED DOWEL PIN FOR ALIGNMENT PIN FEATURES IS A STANDARD 2mm DIN 7-m6 (ISO 2338) GROUND DOWEL PIN ( 2.002 mm TO 2.008 mm).
- 2) FOR A 2mm X 5mm PIN, WE RECOMMEND 0.0791in TO 0.0796in (2.01mm TO 2.02mm) X 0.185in±0.005in (4.7mm±0.13mm) DEEP HOLES BE MADE INTO THE MATING SURFACE FOR THE MOUNT. THE SEPARATION OF THE HOLES IN RELATION TO THE MOUNTING HOLE LOCATION SHOULD HAVE A TOLERANCE OF 0.003in(0.08mm)

DRAWING PROJECTION			<b>LBTEK</b>			
NAME	DATE	MT-AM05T1				
DRAWN	HDE	Jul./13th/22	MIRROR MOUNT FOR φ12.7mm OPTICS, MT HIGH STABILITY SERIE			
APPROVAL	ZXU	Jul./13th/22	MATERIAL	WEIGHT	SCALE	REV
FOR INFORMATION ONLY NOT FOR MANUFACTURING PURPOSES			N/A	0.034 Kg	2:1	C