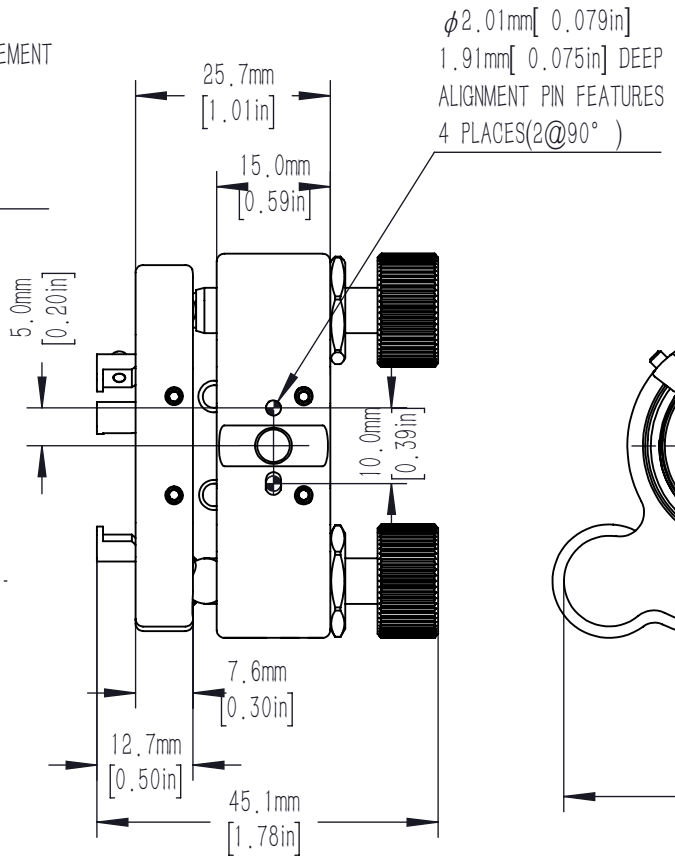
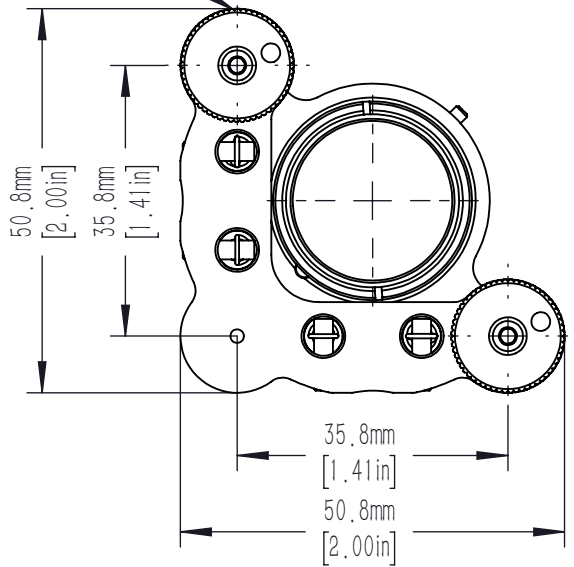
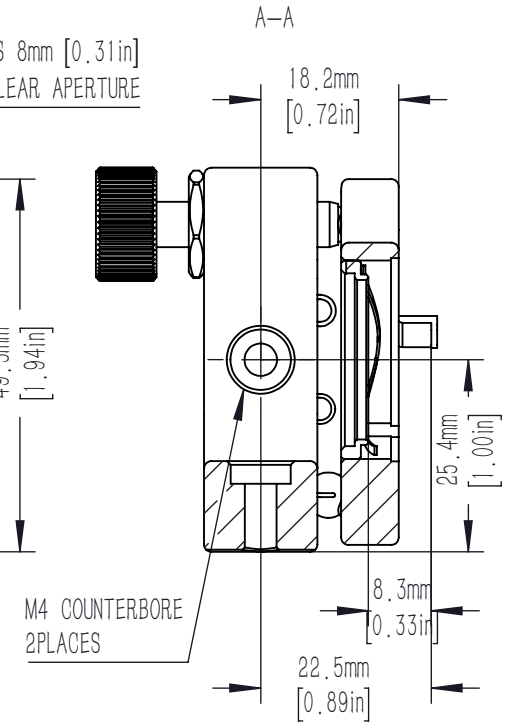
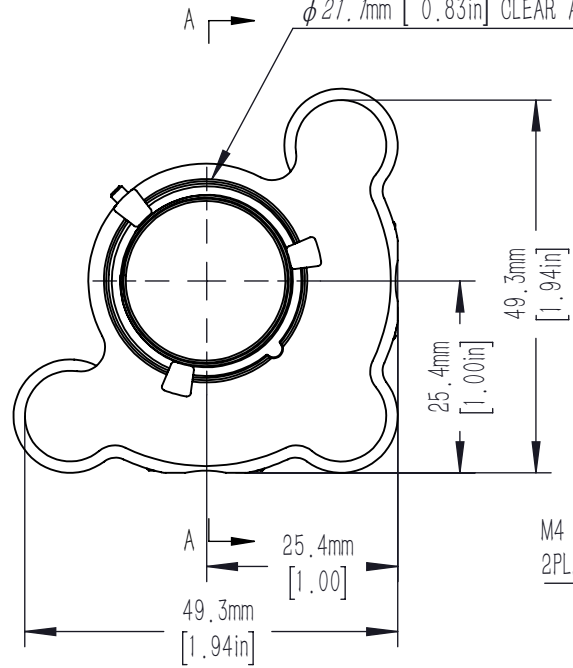


M6X0.25 ADJUSTER SCREWS  
 PROVIDES +/-4° TOTAL ANGULAR DISPLACEMENT  
 (0.4° PER REVOLUTION)  
 LOCKING NUTS INCLUDED  
 2PLACES  
 2.0mm [5/64in] HEX



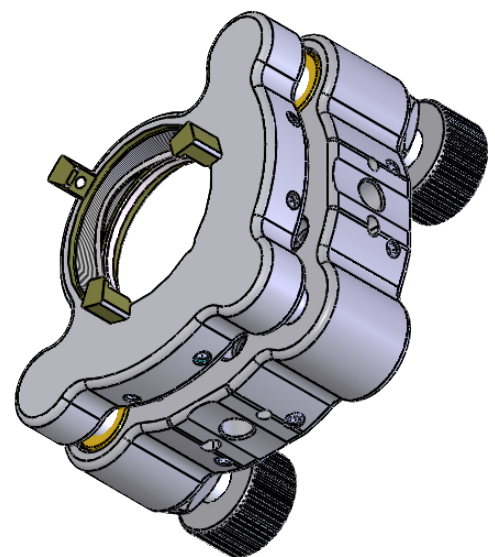
φ2.01mm [0.079in]  
 1.91mm [0.075in] DEEP  
 ALIGNMENT PIN FEATURES  
 4 PLACES(2@90°)

ACCEPTS φ25.4mm [1.00in] OPTICS  
 WAVE SPRING INCLUDED  
 MAX OPTIC THICKNESS IS 8mm [0.31in]  
 φ21.1mm [0.83in] CLEAR APERTURE



M4 COUNTERBORE  
 2PLACES

NOTE:  
 1) RECOMMENDED DOWEL PIN FOR ALIGNMENT PIN FEATURES IS A STANDARD 2mm  
 DIN 7-m6 (ISO 2338) GROUND DOWEL PIN ( 2.002 mm TO 2.008 mm).  
 2) FOR A 2mm X 5mm PIN, WE RECOMMEND 0.0791in TO 0.0796in (2.01mm  
 TO 2.02mm) X 0.185in±0.005in (4.7mm±0.13mm)  
 DEEP HOLES BE MADE INTO THE MATING SURFACE FOR THE MOUNT. THE  
 SEPARATION OF THE HOLES IN RELATION TO THE MOUNTING HOLE  
 LOCATION SHOULD HAVE A TOLERANCE OF 0.003in(0.08mm)



DRAWING PROJECTION			<b>LBTEK</b>			
NAME	DATE	MT-AM1F1				
DRAWN	PCHEN	AUG./7th/25	MTHIGH STABILITY SERIES φ25.4mm LOW DISTORTION MIRROR MOUNT			
APPROVAL	YHLI	AUG./7th/25	MATERIAL	WEIGHT	SCALE	REV
FOR INFORMATION ONLY NOT FOR MANUFACTURING PURPOSES			N/A	0.24 Kg	1:1	A