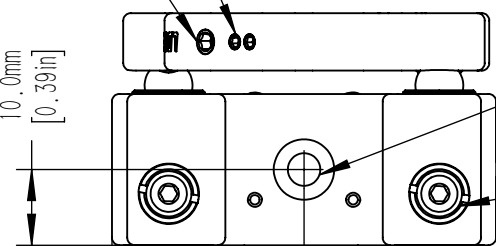


PRE-LOAD SCREW
DO NOT ADJUST

VIEW B

FLEXURE LOCK SCREW
2.0mm HEX

10.0mm
[0.39in]

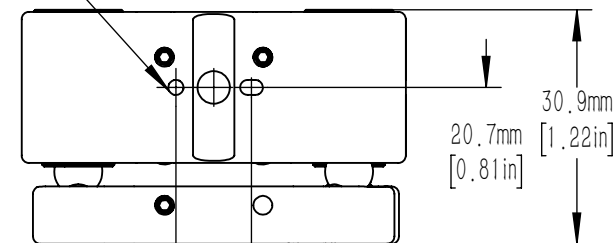


2.01mm [0.079in]
1.9mm [0.075in] DEEP
ALIGNMENT PIN FEATURES
4 PLACES (2@90°)
(SEE NOTE(1&2)BELOW)

M4 COUNTERBORE
2 PLACES

M6X0.25 ADJUSTER SCREWS
ADJUSTER LOCKING NUT
PROVIDES +/-4° TOTAL ANGULAR DISPLACEMENT
(0.4° PER REVOLUTION)
2 PLACES
2.0mm [5/64in] HEX

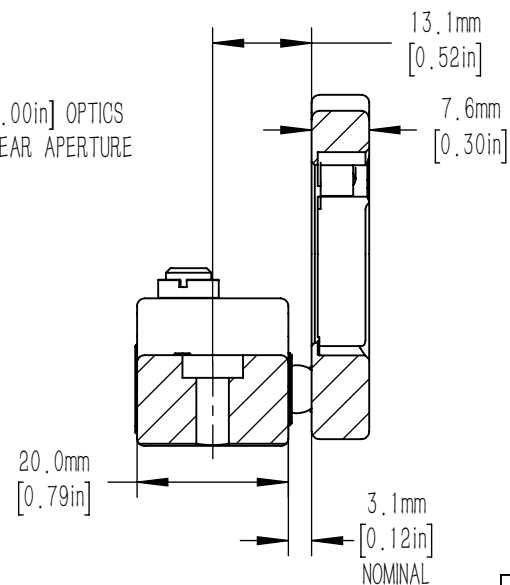
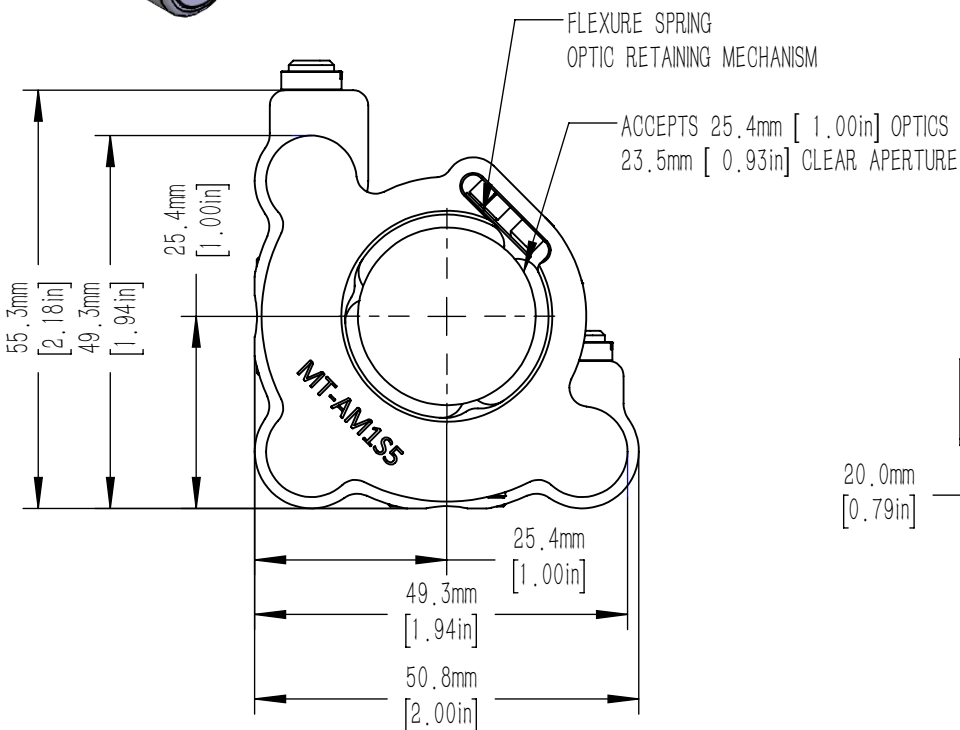
25.4mm
[1.00in]



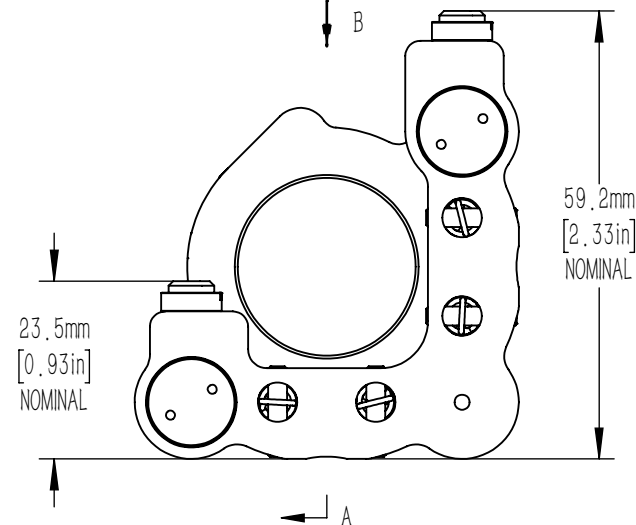
30.9mm
20.7mm [1.22in]
[0.81in]

10.0mm
[0.39in]

A
B



SECTION A-A
SCALE 1 : 1



NOTE:
1) RECOMMENDED DOWEL PIN FOR ALIGNMENT PIN FEATURES IS A STANDARD 2mm DIN 7-m6 (ISO 2338) GROUND DOWEL PIN (2.002 mm TO 2.008 mm).

2) FOR A 2mm X 5mm PIN, WE RECOMMEND 0.0791in TO 0.0796in (2.01mm TO 2.02mm) X 0.185in±0.005in (4.7mm±0.13mm) DEEP HOLES BE MADE INTO THE MATING SURFACE FOR THE MOUNT. THE SEPARATION OF THE HOLES IN RELATION TO THE MOUNTING HOLE LOCATION SHOULD HAVE A TOLERANCE OF 0.003in(0.08mm).

DRAWING PROJECTION				LBTEK			
	NAME	DATE	MT-AM1S5				
DRAWN	HDE	Nov./30th/21	HEX DRIVE MIRROR MOUNT FOR ϕ 25.4mm OPTICS, MT HIGH STABILITY SERIES				
APPROVAL	ZXU	Nov./30th/21	MATERIAL	WEIGHT	SCALE	REV	
FOR INFORMATION ONLY NOT FOR MANUFACTURING PURPOSES			N/A	0.24 Kg	1:1	B	