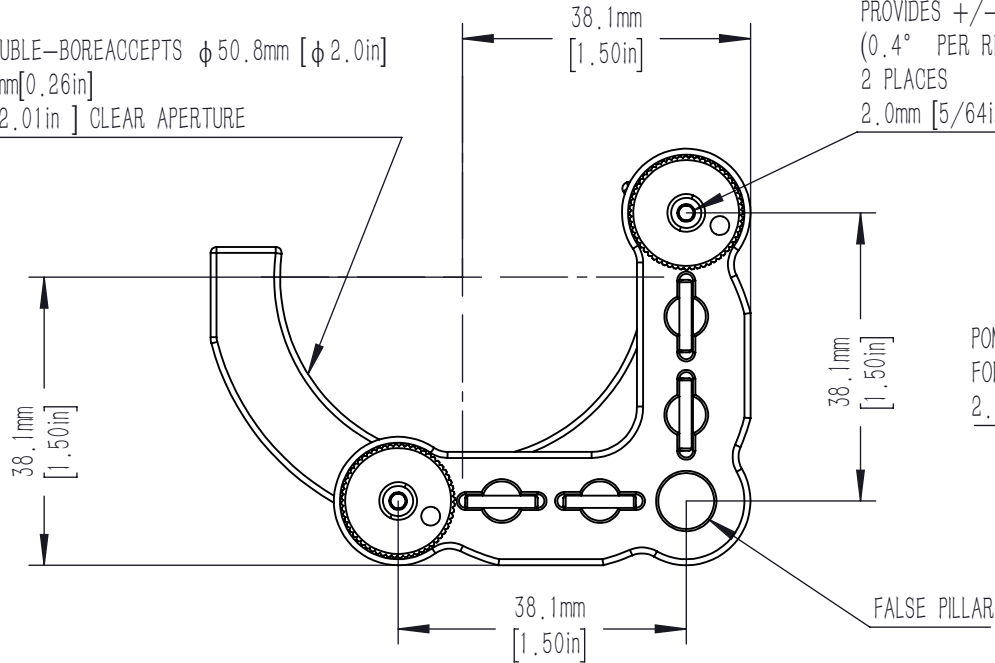
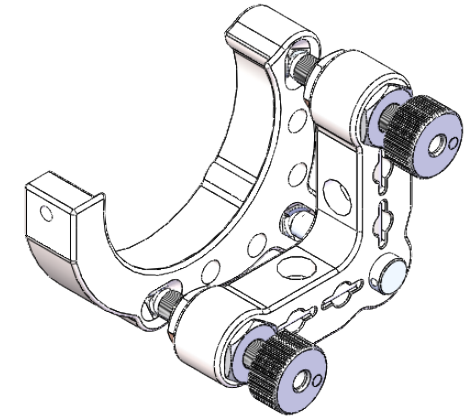
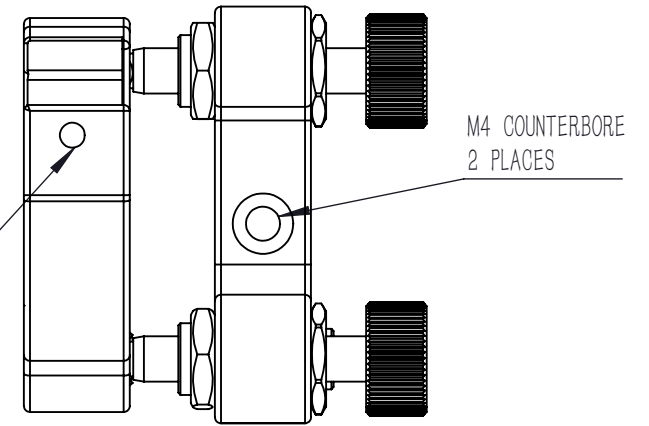


MOUNTING DOUBLE-BORE ACCEPTS $\phi 50.8\text{mm}$ [$\phi 2.0\text{in}$]
 MINIMUM 6.5mm [0.26in]
 $\phi 51\text{mm}$ [$\phi 2.01\text{in}$] CLEAR APERTURE

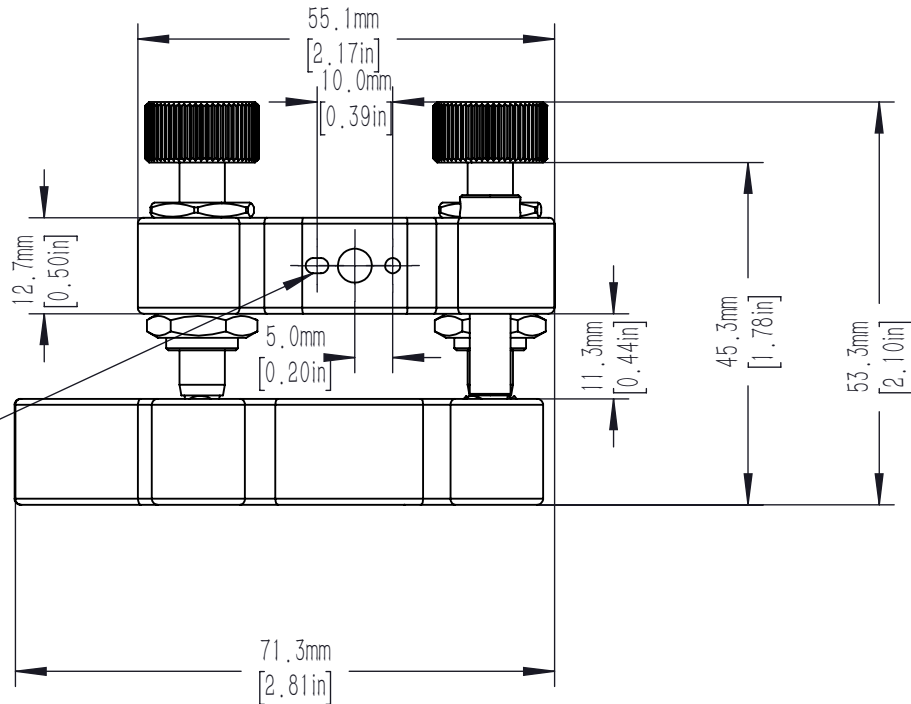
M6X0.25 ADJUSTER SCREWS
 PROVIDES $\pm 7^\circ$ TOTAL ANGULAR DISPLACEMENT
 (0.4° PER REVOLUTION)
 2 PLACES
 2.0mm [5/64in] HEX



POM-TIPPED SET SCREW
 FOR SECURING OF MOUNTED OPTIC
 2.0mm [5/64in] HEX



$\phi 0.079\text{in}$ [$\phi 2.01\text{mm}$]
 DEEP 0.075in [1.9mm]
 ALIGNMENT PIN FEATURES
 4 PLACES



DRAWING PROJECTION			LBTEK			
NAME	DATE	MT-AM2C1				
DRAWN	ZZH	MAR./20th/24	MIRROR MOUNT FOR $\phi 50.8\text{mm}$ OPTICS, MT HIGH STABILITY SERIES			
APPROVAL	HDE	MAR./20th/24	MATERIAL	WEIGHT	SCALE	REV
FOR INFORMATION ONLY NOT FOR MANUFACTURING PURPOSES			N/A	0.278 Kg	1:1	A