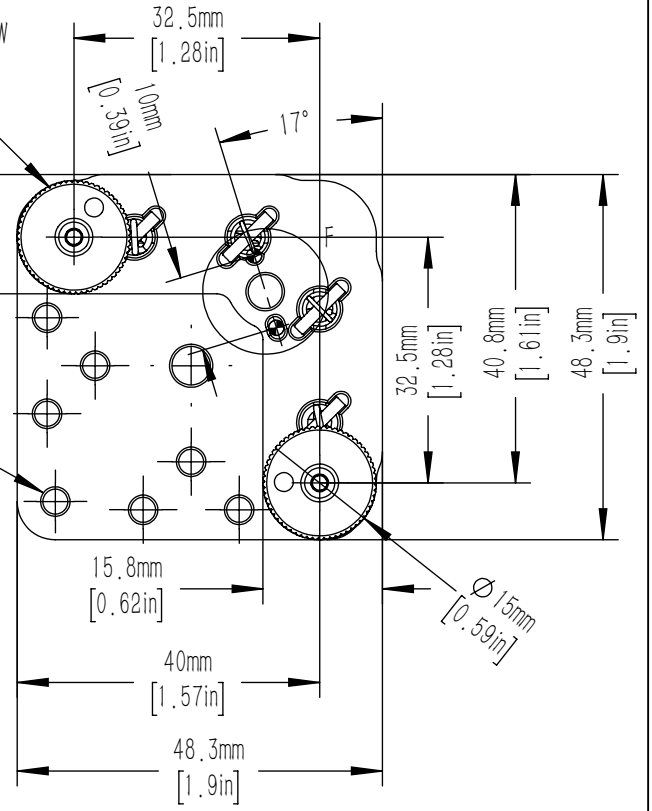
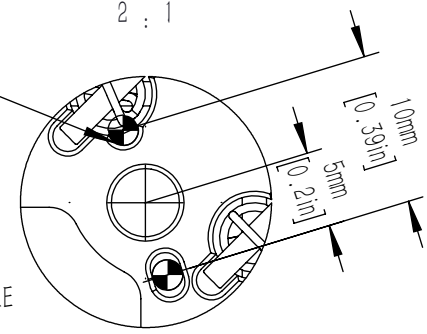


M6 x 0.25 ADJUSTER SCREW
 2.0mm [5/64in] HEX
 REMOVABLE KNOBS
 2 PLACES

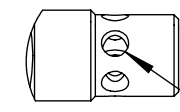


$\phi 2.01\text{mm}$ [0.079in] 1.91mm [0.075in] DEEP ALIGNMENT PIN FEATURES (SEE NOTE (1) BELOW)

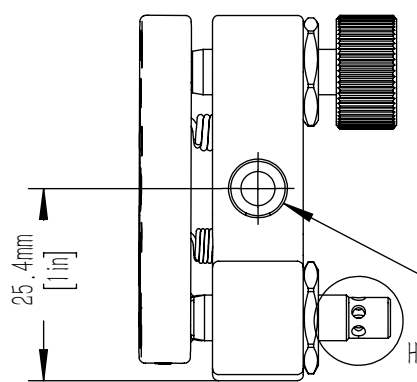
F
2 : 1



H
2 : 1



$\phi 1.8\text{mm}$ [0.07in] THRU ADJUSTER SIDE HOLES 3 PLACES PER ADJUSTER



COUNTERBORED MOUNTING HOLE FOR USE WITH M4[#8] SOCKET HEAD CAP SCREW 2 PLACES @ 90°

NOTE.

- 1) RECOMMENDED DOWEL PIN FOR ALIGNMENT FEATURES IS A STANDARD DIN 7-m6 (ISO 2338) GROUND DOWEL PIN.
- 2) FOR A $\phi 2\text{mm}$ X 5mm PIN, WE RECOMMEND A HOLE THAT IS $\phi 2.002\text{mm}$ TO $\phi 2.008\text{mm}$ IN DIAMETER X $0.185\text{in} \pm 0.005\text{in}$ DEEP BE MADE INTO THE MATING SURFACE FOR THE MOUNT. THE SEPARATION OF THE HOLES IN RELATION TO THE MOUNTING HOLE SHOULD HAVE A TOLERANCE OF $\pm 0.003\text{in}$.

DRAWING PROJECTION			LBTEK			
	NAME	DATE				
DRAWN	SSO	MAR./6th/24	STAINLESS STEEL PLATFORM ADJUSTMENT FRAME			
APPROVAL	HDE	MAR./6th/24	MATERIAL	WEIGHT	SCALE	REV
FOR INFORMATION ONLY NOT FOR MANUFACTURING PURPOSES			STAINLESS STEEL	0.217 Kg	1:1	A