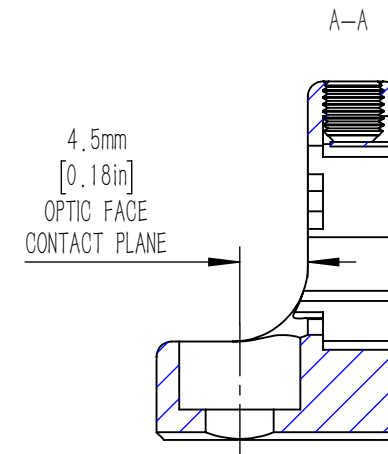
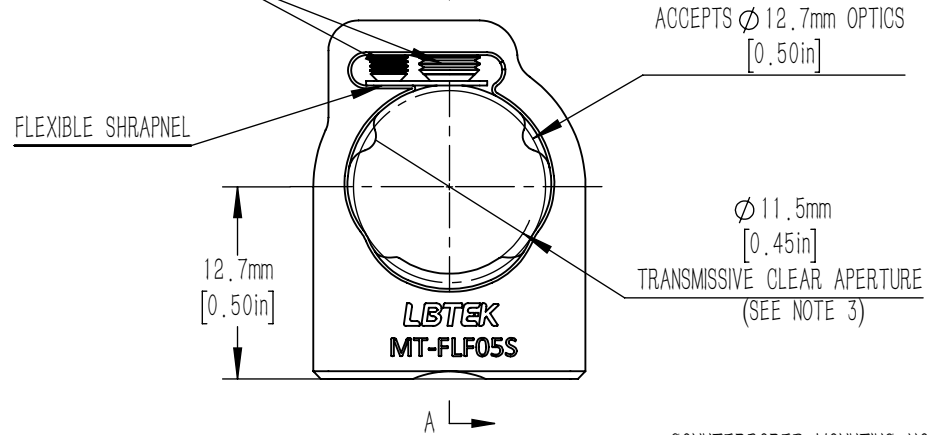
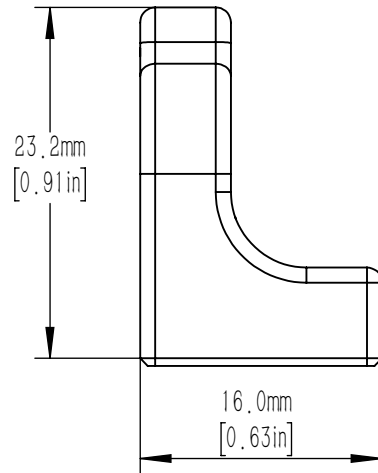
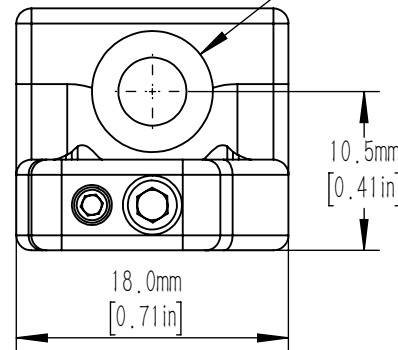


FLAT END TIGHTENING SCREWS



COUNTERBORED MOUNTING HOLE FOR USE WITH M4



- 1) RECOMMENDED DOWEL PIN FOR ALIGNMENT PIN FEATURES IS A STANDARD  $\varnothing 2\text{mm}$  DIN 7-m6 (ISO 2338) GROUND DOWELPIN ( $\varnothing 2.002\text{ mm}$  TO  $\varnothing 2.008\text{ mm}$ ).
- 2) FOR A  $\varnothing 2\text{mm}$  X  $\varnothing 5\text{mm}$  PIN, WE RECOMMEND  $\varnothing 0.0791\text{in}$  TO  $\varnothing 0.0796\text{in}$  X  $0.175\text{in} \pm 0.002\text{in}$  DEEP HOLES BE MADE INTO THE MATING SURFACE FOR THE MOUNT. THE SEPARATION OF THE HOLES IN RELATION TO THE MOUNTING HOLE LOCATION SHOULD HAVE A TOLERANCE OF  $\pm 0.003\text{in}$ .
- 3) FULL CLEAR APERTURE ACCESSIBLE ONLY WHEN USING LOW PROFILE MOUNTING SCREWS.

DRAWING PROJECTION			<b>LBTEK</b>			
	NAME	DATE	For mounting optical components with a diameter of 12.7mm			
DRAWN	SSO	MAR./6th/20	MATERIAL	WEIGHT	SCALE	REV
APPROVAL	ZXU	MAR./6th/20	N/A	0.019 Kg	2:1	B
FOR INFORMATION ONLY NOT FOR MANUFACTURING PURPOSES						