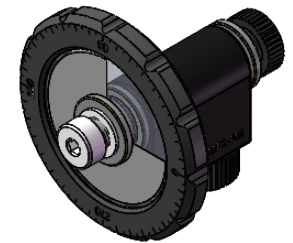


NOTES

1. MATERIAL: UVFS
2. OPERATION WAVELENGTH: 650 nm–1050 nm
3. CLEAR APERTURE: 9.5 mm < COATING AREA < 22 mm
4. SURFACE FLATNESS: $< \lambda$ @ 633 nm
5. SURFACE QUALITY: 60/40
6. PARALLELISM: < 3 arcmin
7. COATING (S1, S2):
 S1: NiCrFe
 S2: BBAR 650–1050nm, R_{avg} : $< 0.5\%$, 0° AOI
8. COATING RADIAL ANGLE: $270^\circ \pm 5^\circ$
9. OPTICAL DENSITY(OD): 0.02(TYP)–2.0
10. TERMINAL DENSITY TOLERANCE: $\pm 5\%$
11. LINEAR DENSITY TOLERANCE: $\pm 5\%$
12. CHAMFER: < 0.2 mm, 45°



DRAWING PROJECTION				LBTEK			
		NAME	DATE	NDFR-25C-2M-B			
DRAWN	LTAN	APR. /16th/25	CONTINUOUSLY VARIABLE ND FILTER $\varnothing 25.0$ mm, OD=0.02–2.0@650 nm–1050 nm				
APPROVAL	WCHENG	APR. /16th/25	MATERIAL	WEIGHT	SCALE	REV	
FOR INFORMATION ONLY NOT FOR MANUFACTURING PURPOSES			N/A	19.7g	2:1	A	