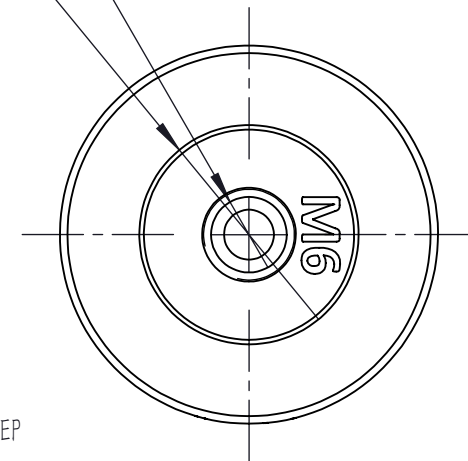
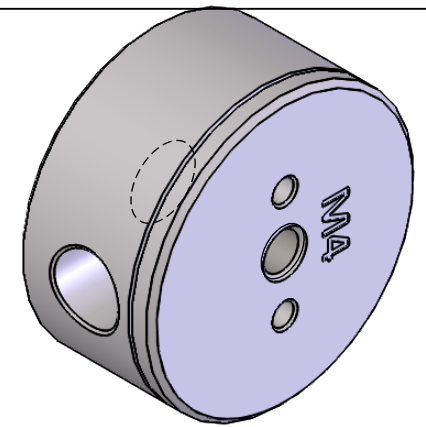


M6x1.0 MOUNTING HOLE
 6mm [0.24in] DEEP

$\varnothing 14.5\text{mm}$ [0.57in]
 0.3mm [0.01in] DEEP

$\varnothing 6\text{mm}$ [0.24in]
 6.5mm [0.26in] DEEP
 2 PLACES
 FOR 5mm BALL DRIVER OR HEX KEY
 PROVIDES EXTRA TORQUE WHEN
 TIGHTENING/REMOVING MOUNTS



DRAWING PROJECTION			LBTEK			
NAME	DATE					
DRAWN	ZHE	NOV./18th/19	$\varnothing 25\text{mm}$ EXTENSION ROD			
APPROVAL	ZYANG	NOV./18th/19	MATERIAL	WEIGHT	SCALE	REV
FOR INFORMATION ONLY NOT FOR MANUFACTURING PURPOSES			STAINLESS STEEL	0.04 Kg	2:1	B